

# Blue Line

PL	Instrukcja Obsługi – Aplikacja sterująca	2
EN	User manual – Control application	17
DE	Bedienungsanleitung Steuerungs – Applikation	32
FR	Mode d'emploi – Application de contrôle	47
RU	Инструкция по применению – Приложение управления	62
IT	Manuale d'istruzioni – Applicazione di controllo	77
SK	Manuál ovládania – Regulačná aplikácia	92
CZ	Manuál ovládání – Regulační aplikace	107

PL

EN

DE

FR

RU

IT

SK

CZ

# Spis treści



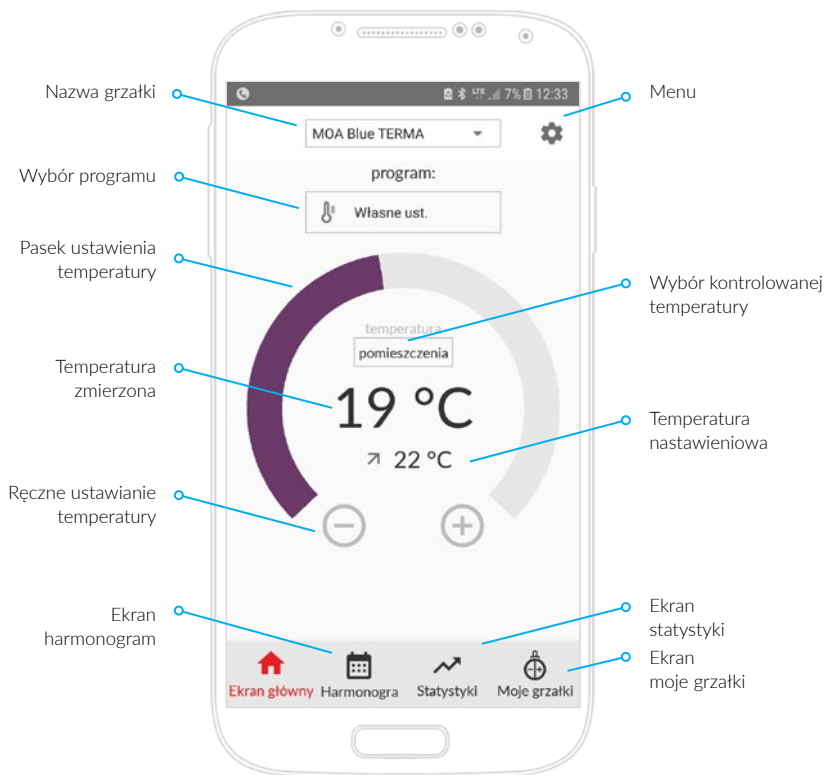
Ekran główny aplikacji	3
Moje grzałki	4
Harmonogram	5
Ustawianie harmonogramu	6
Ustawianie harmonogramu	7
Dodawanie grzałki	9



Ekran główny aplikacji	10
Moje grzałki	11
Harmonogram	12
Ustawianie harmonogramu	13
Ustawianie timera	15
Dodawanie grzałki	16

# Ekran główny aplikacji

(ekran aktywny)



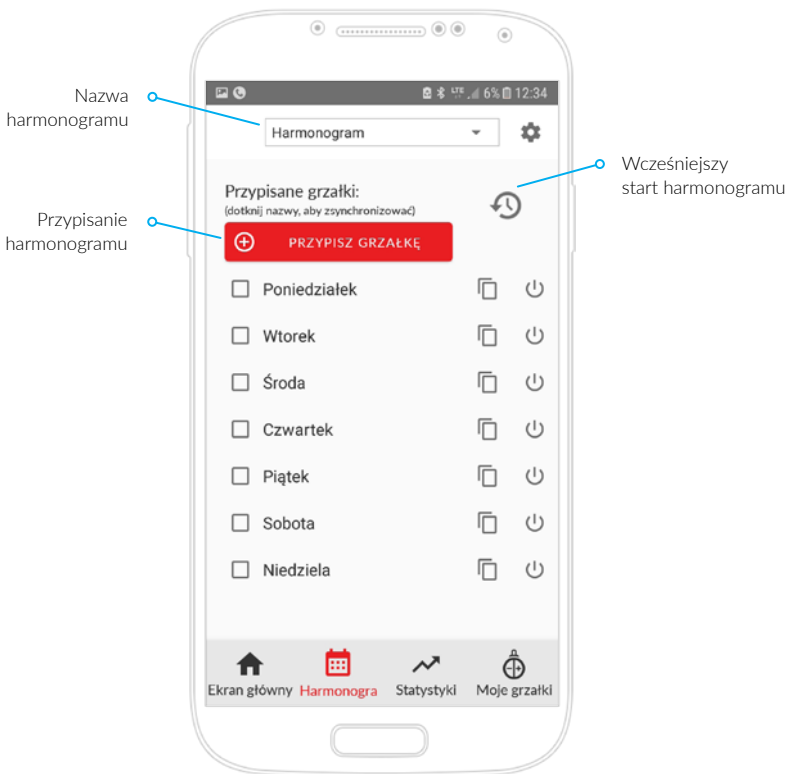
# Moje grzałki

(ekran informacyjny)



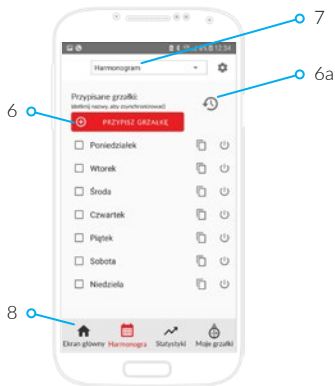
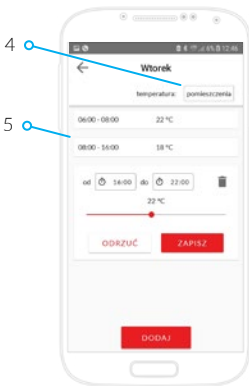
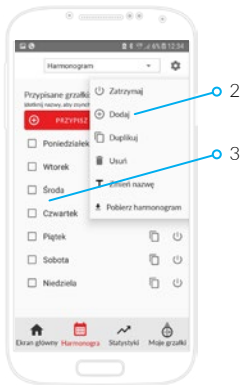
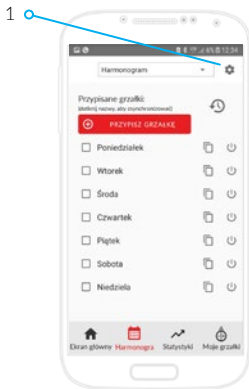
# Harmonogram

(ekran aktywny)



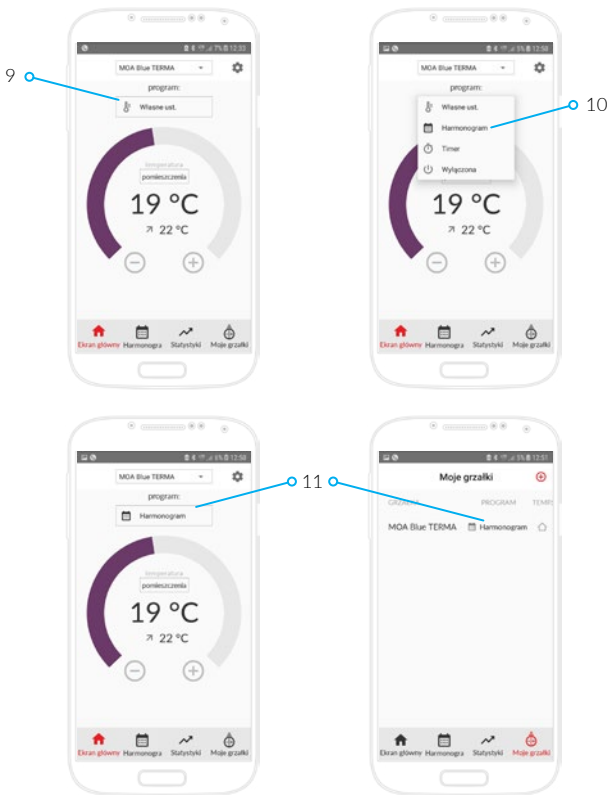
# Ustawianie harmonogramu

(1)

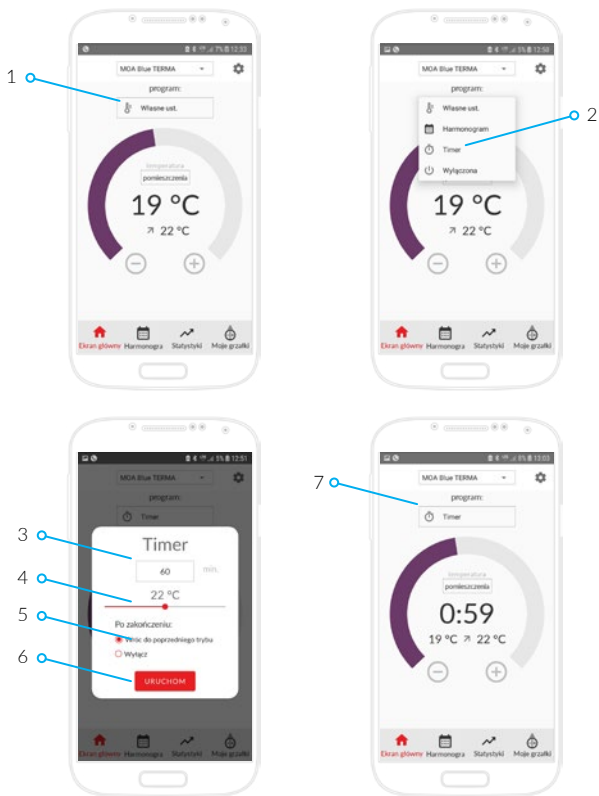


# Ustawianie harmonogramu

(2)

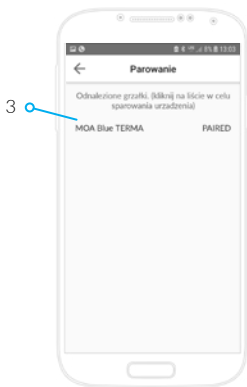
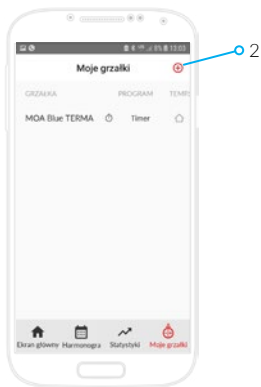
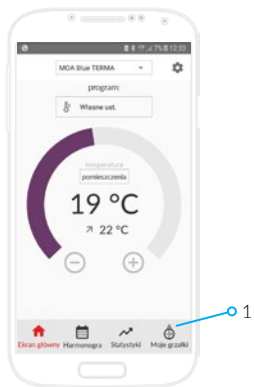


# Ustawianie timera



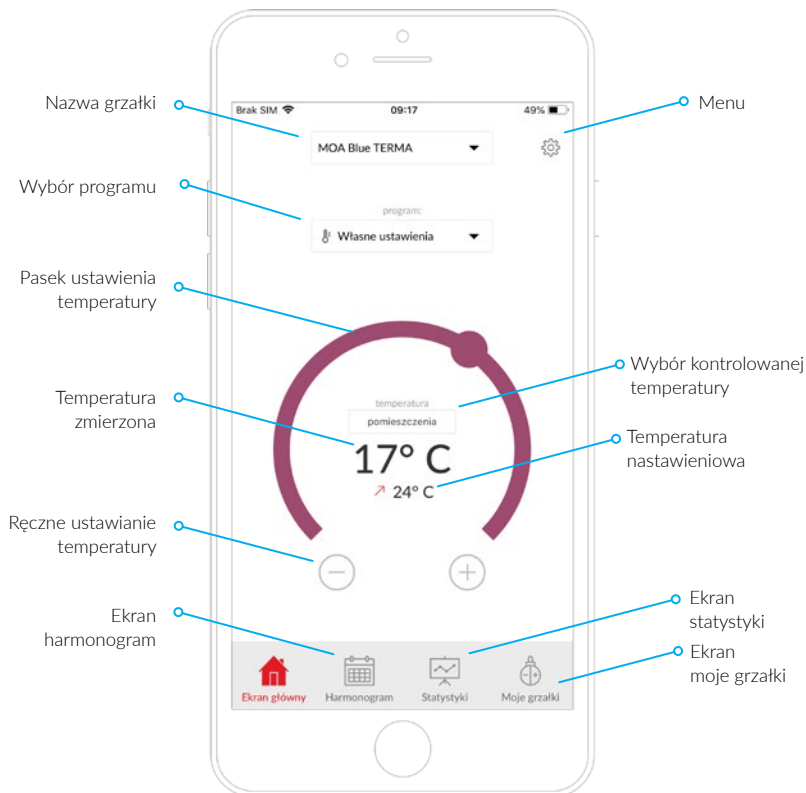


# Dodawanie grzałki



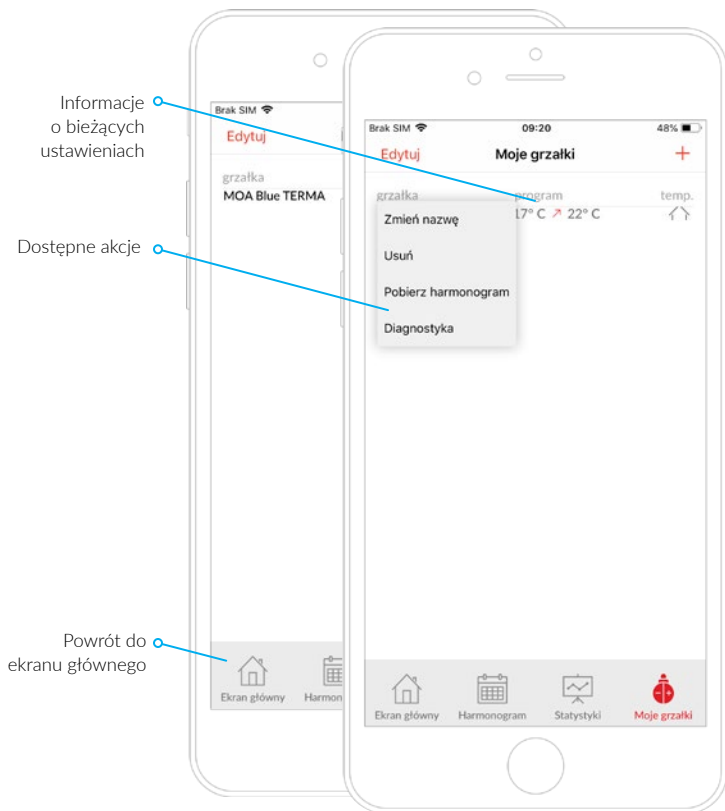
# Ekran główny aplikacji

(ekran aktywny)



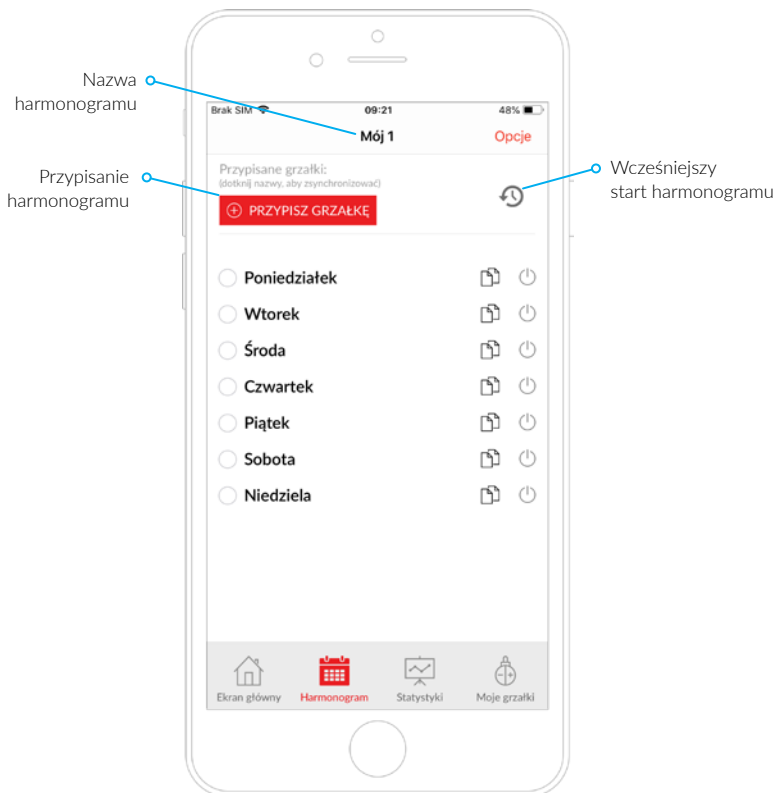
# Moje grzałki

(ekran informacyjny)



# Harmonogram

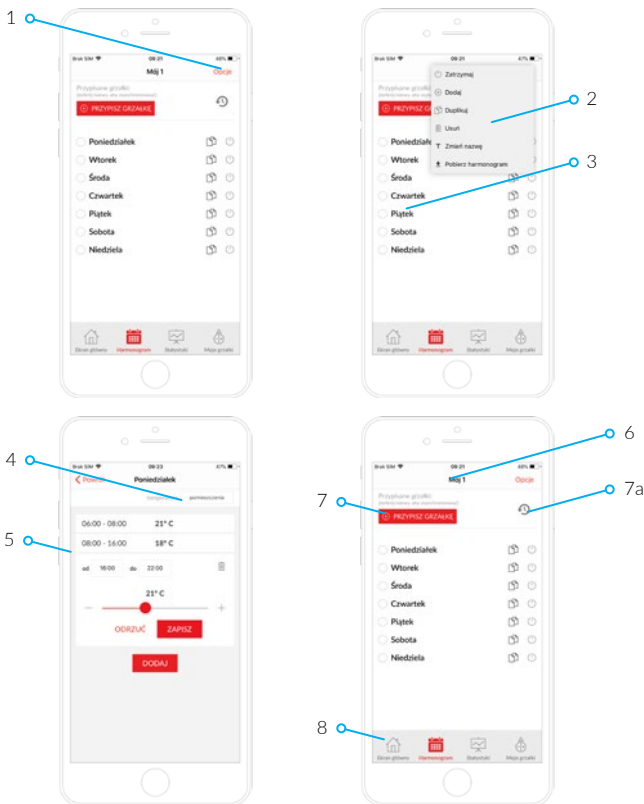
(ekran aktywny)



# Ustawianie harmonogramu

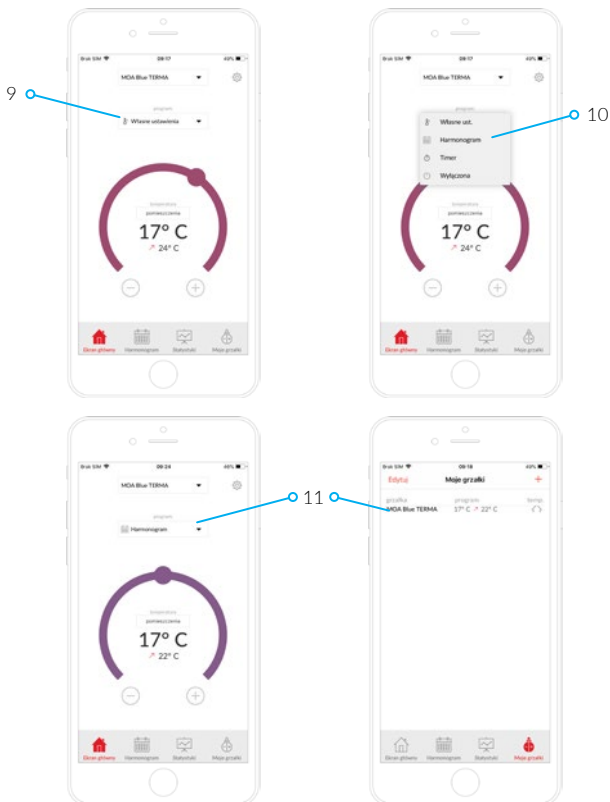


(1)

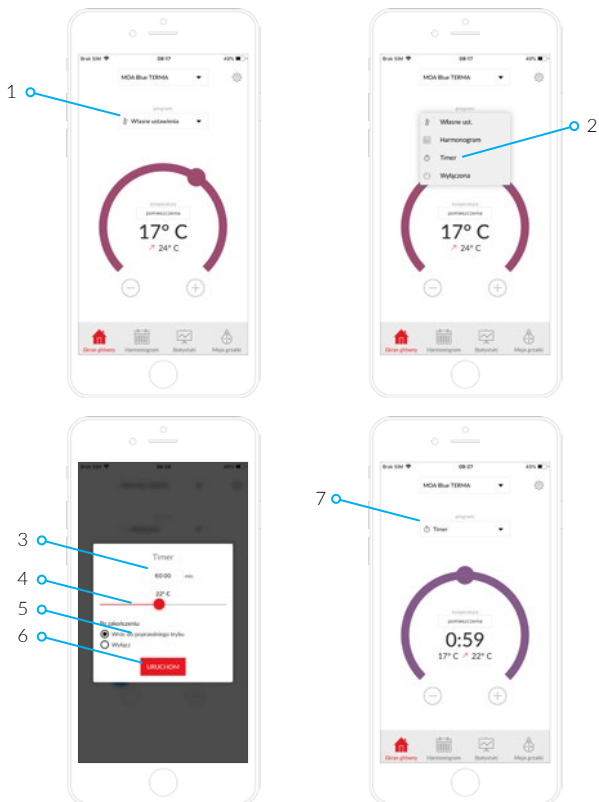


# Ustawianie harmonogramu

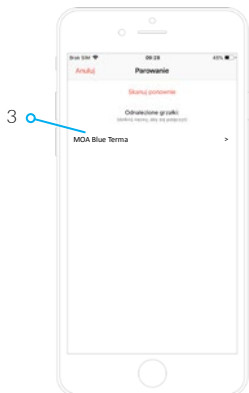
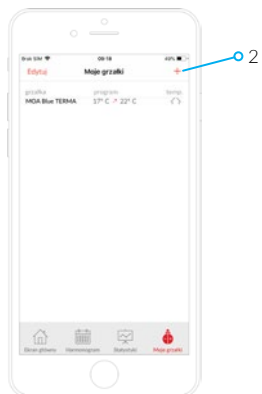
(2)



# Ustawianie timera



# Dodawanie grzałki





# Index



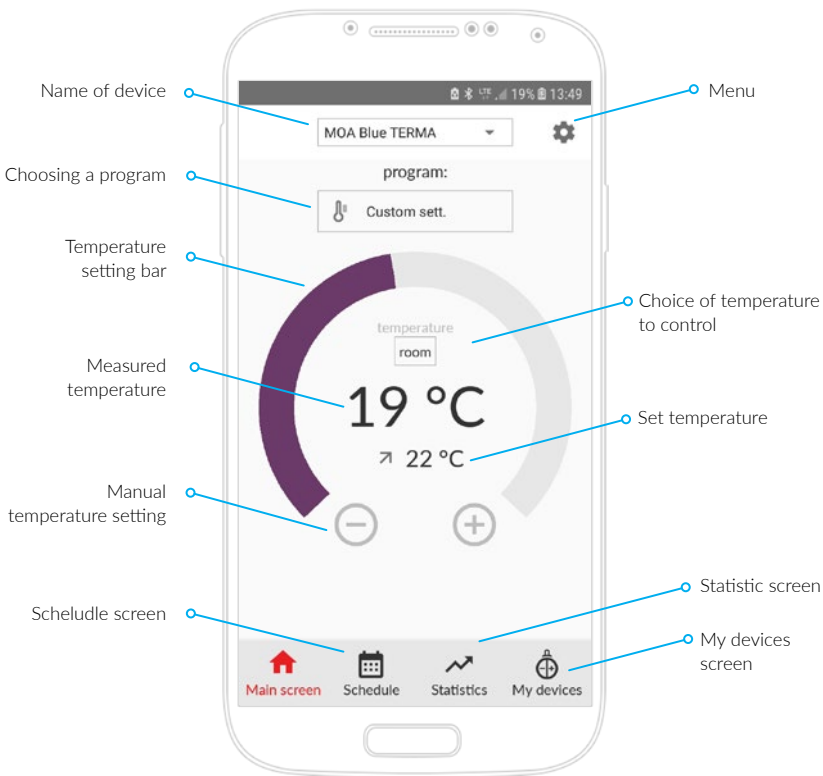
Main screen	18
My devices	19
Schedule	20
Setting schedule	21
Setting timer	23
Adding a heating element	24



Main screen	25
My devices	26
Schedule	27
Setting schedule	28
Setting timer	30
Adding a heating element	31

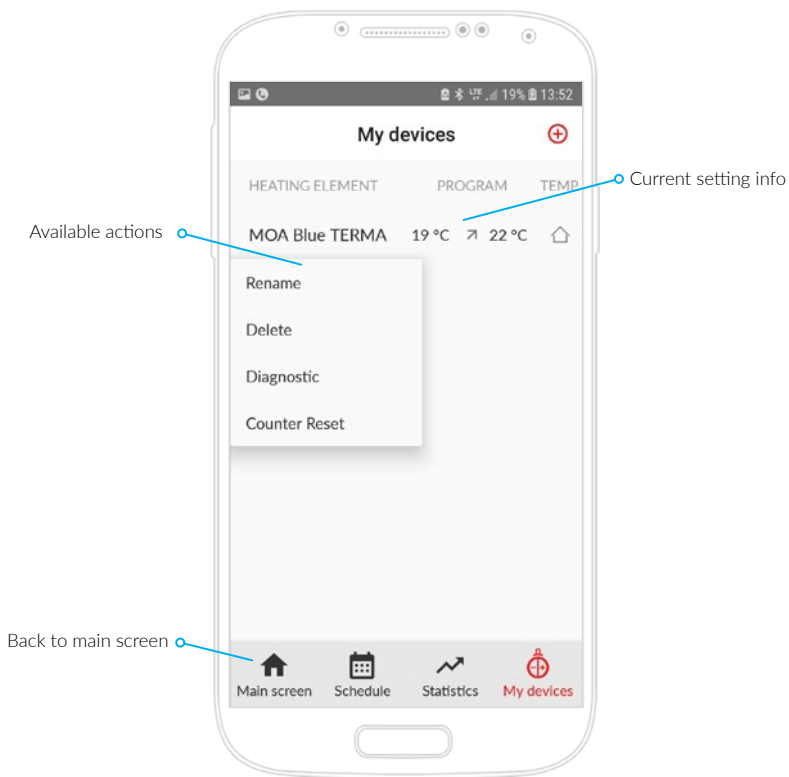
# Main screen

(active screen)



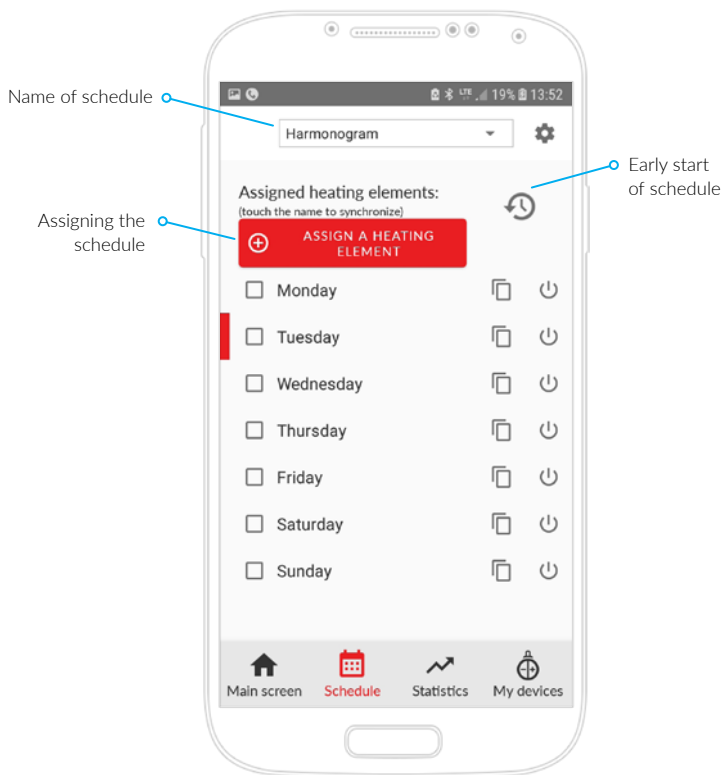
# My devices

(info screen)



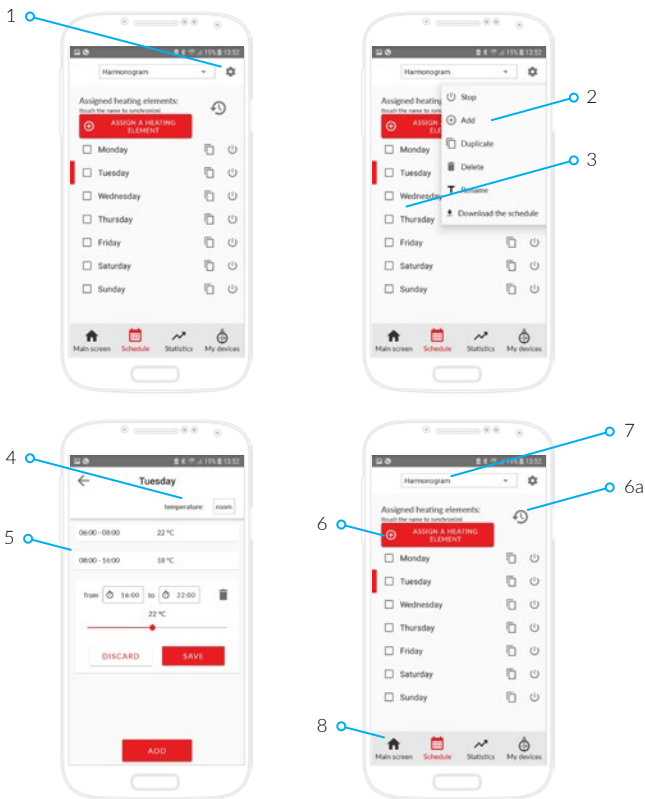
# Schedule

(active screen)



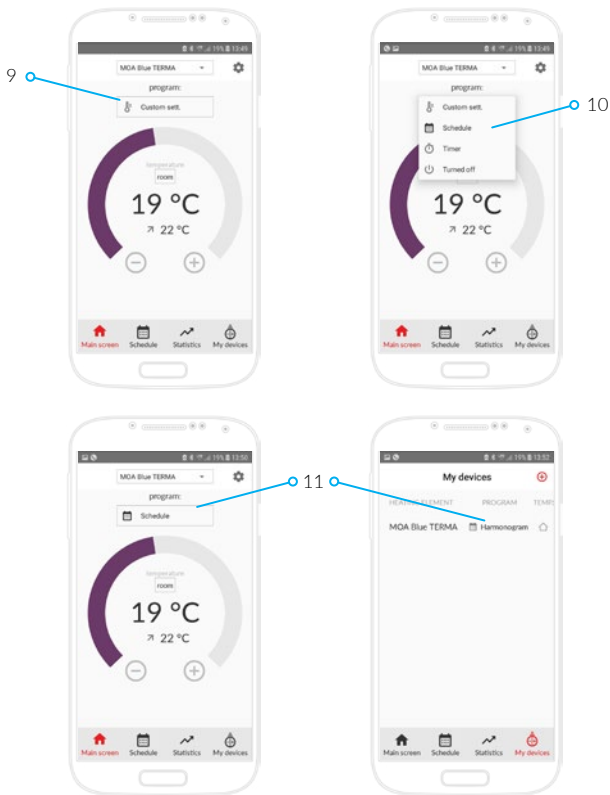
# Setting schedule

(1)

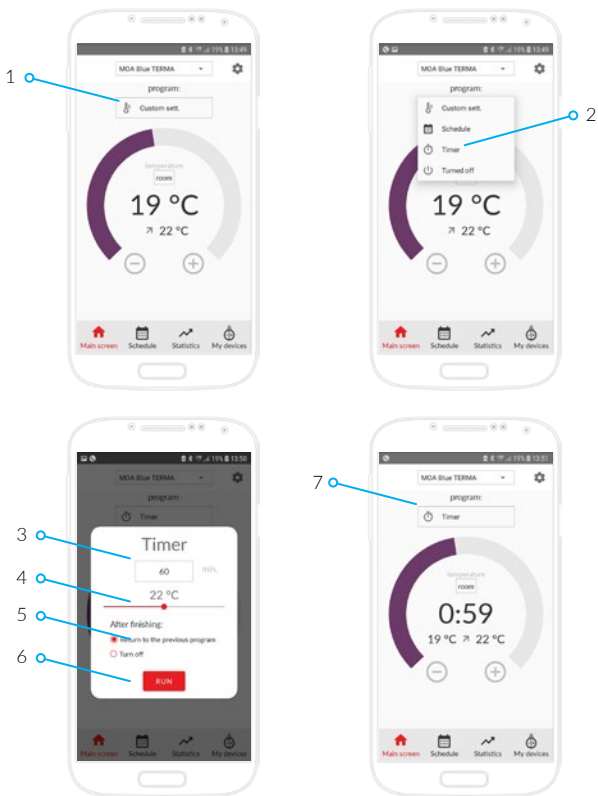


# Setting schedule

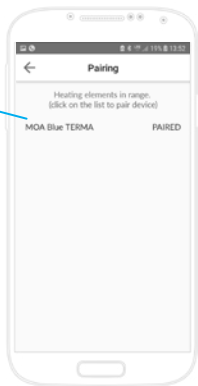
(2)



# Setting timer



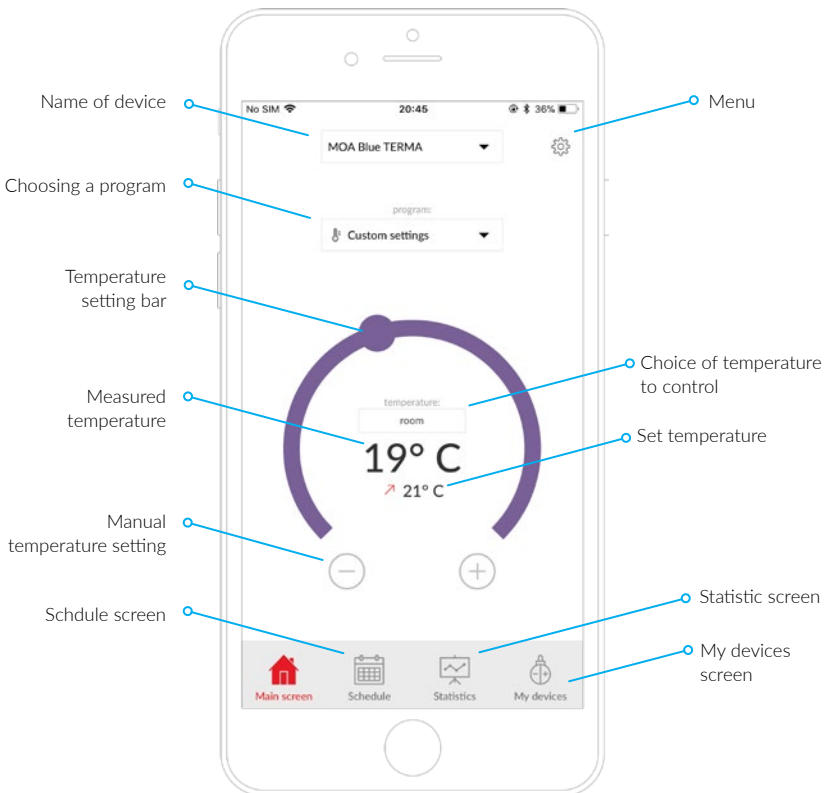
# Adding a heating element





# Main screen

(active screen)



# My devices

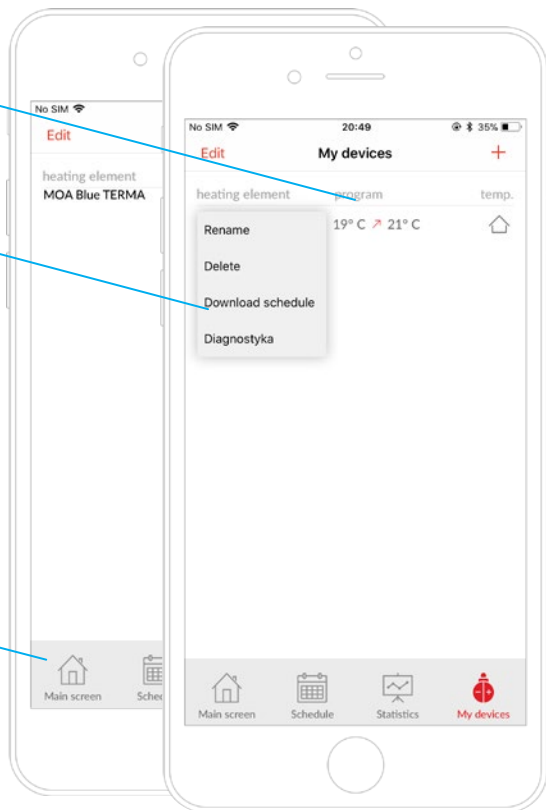
(info screen)



Current setting info

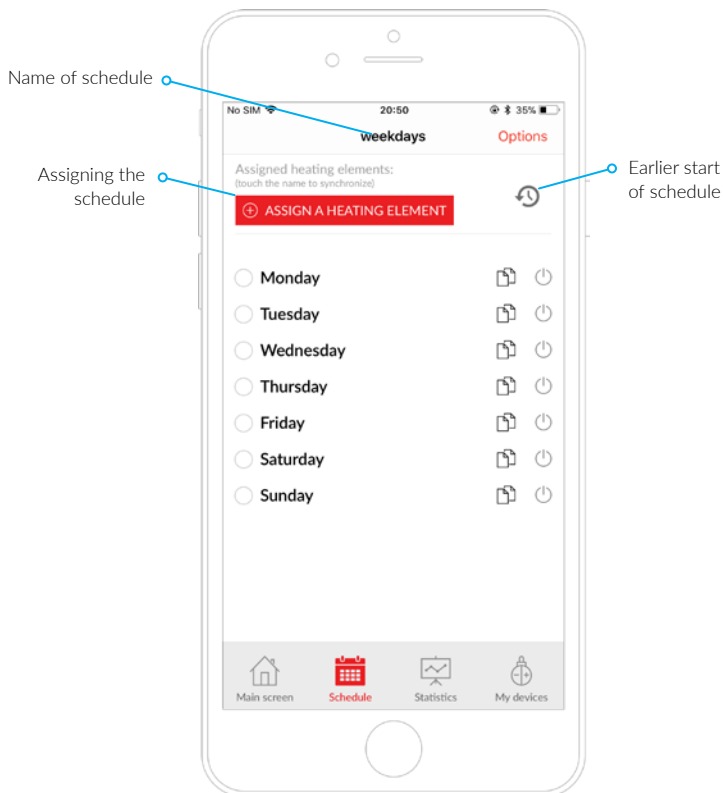
Available actions

Back to main screen



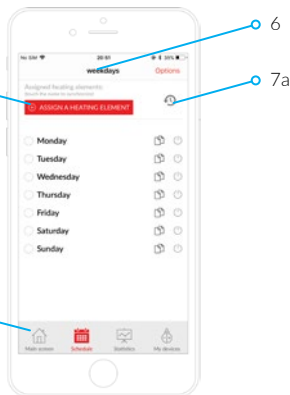
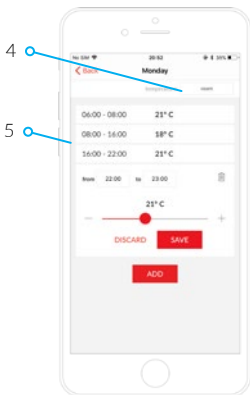
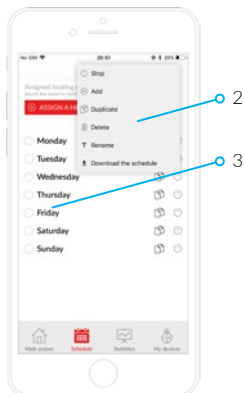
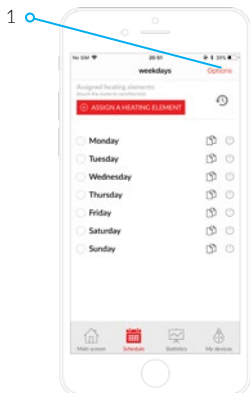
# Schedule

(active screen)



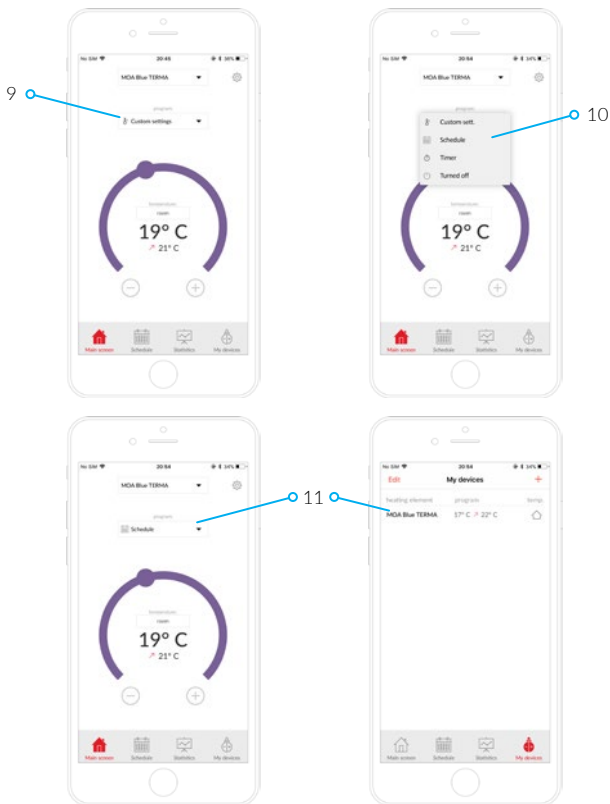
# Setting schedule

(1)

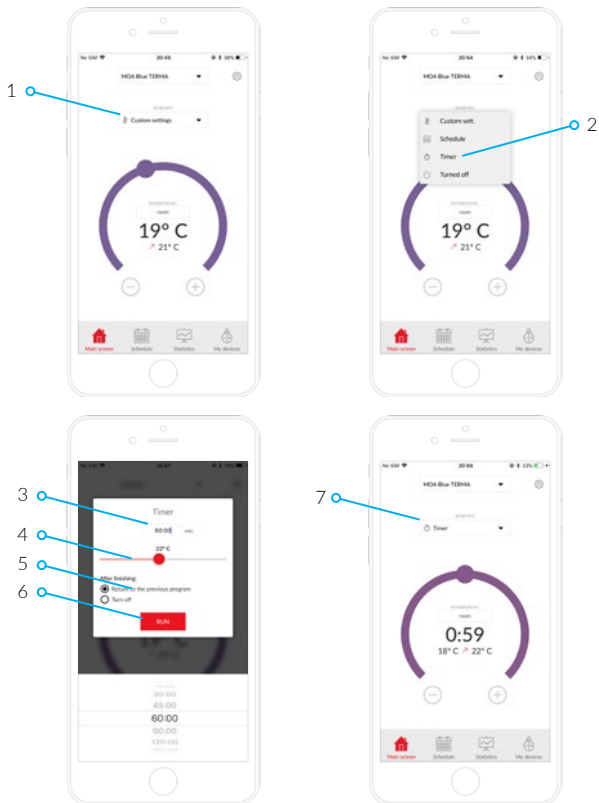


# Setting schedule

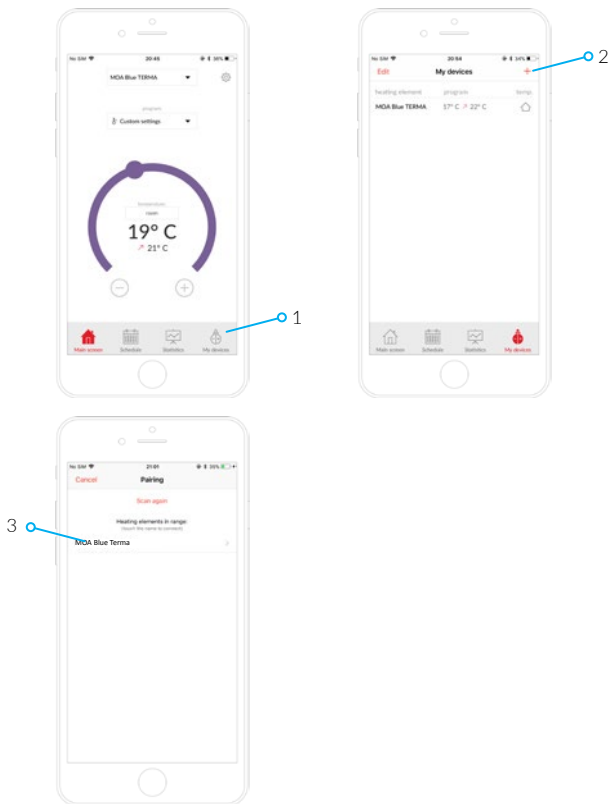
(2)



# Setting timer



# Adding a heating element



# Inhaltsverzeichnis



Hauptmenü	33
Meine Heizpatronen	34
Zeitplan	35
Einstellung des Zeitplans	36
Einstellen der Timer Funktion	38
Hinzufügen einer neuen Heizpatrone	39

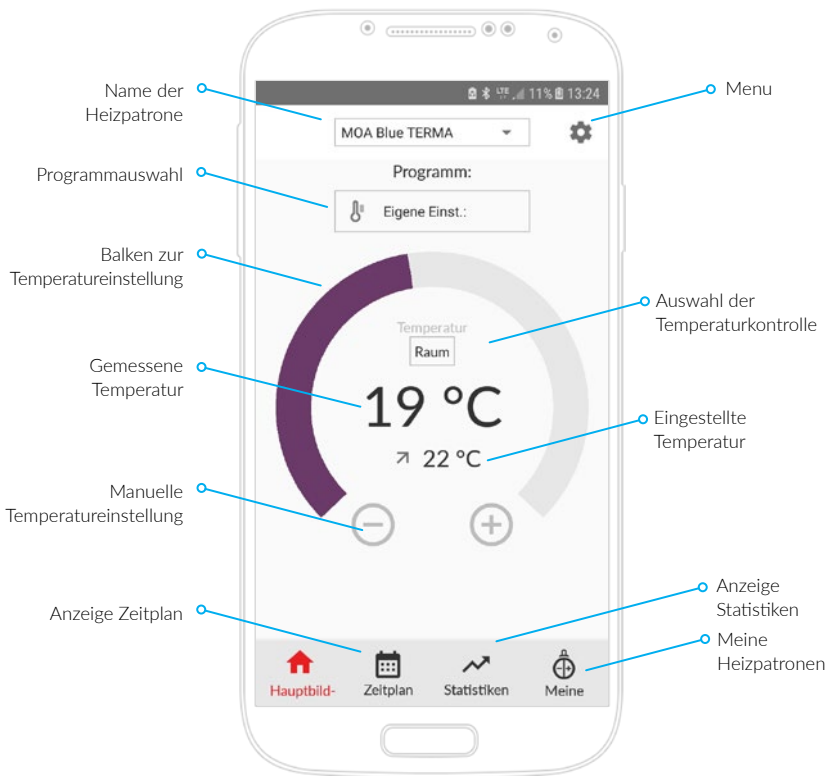


Hauptmenü	40
Meine Heizpatronen	41
Zeitplan	42
Einstellung des Zeitplans	43
Einstellen der Timer Funktion	45
Hinzufügen einer neuen Heizpatrone	46



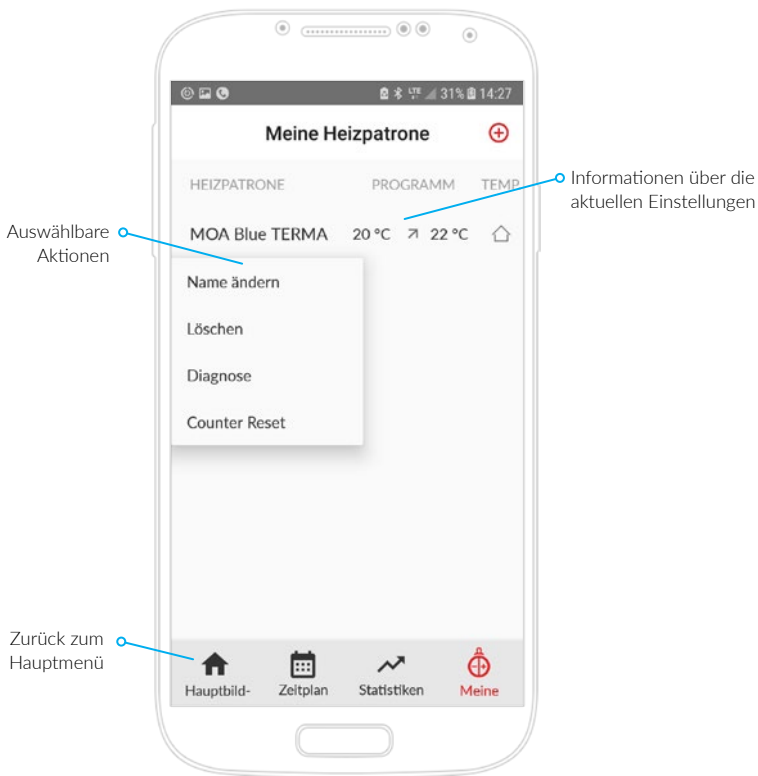
# Hauptmenü

(Aktives Menü)



# Meine Heizpatronen

(Informationsbildschirm)



# Zeitplan

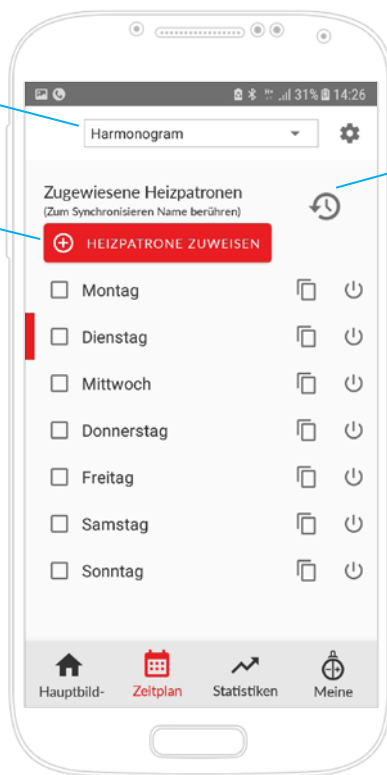
(Aktives Menü)



Bezeichnung des  
Zeitplans

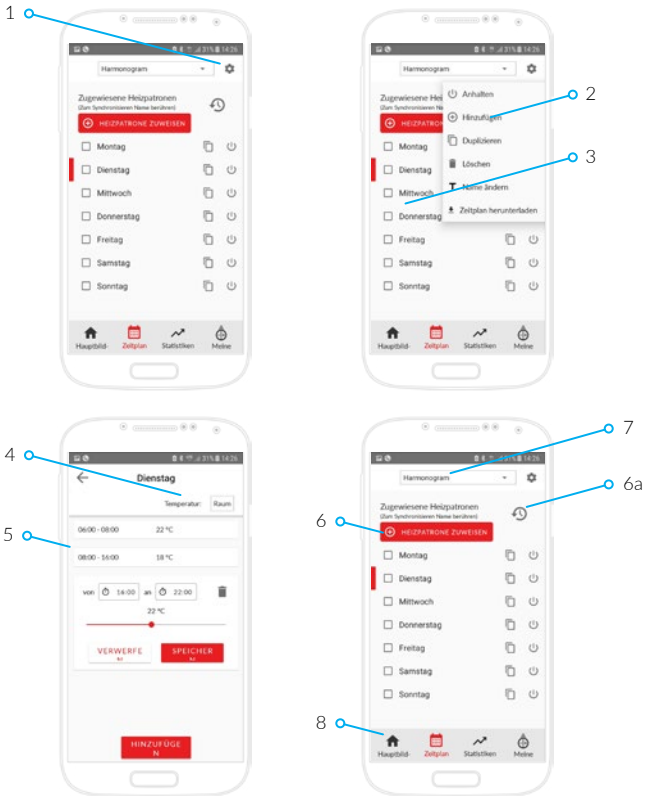
Zuweisung eines  
Zeitplans

Adaptive start  
Funktion



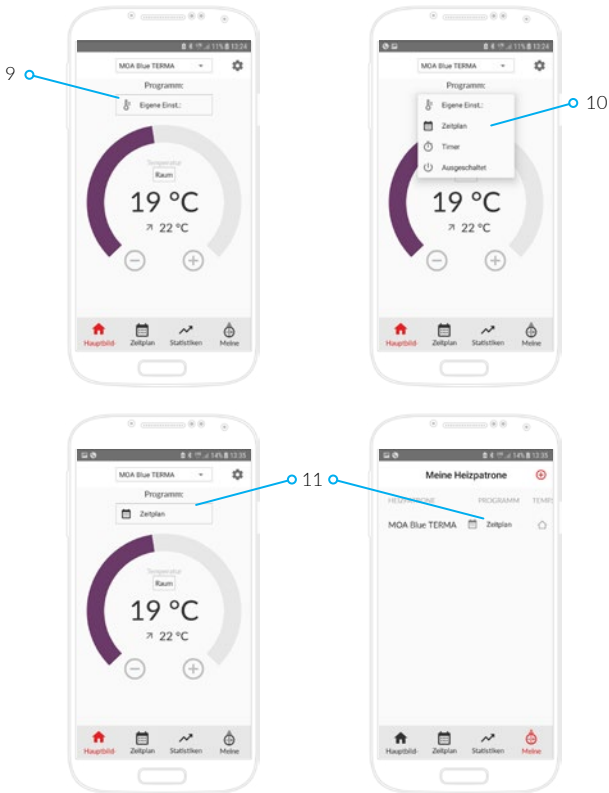
# Einstellung des Zeitplans

(1)

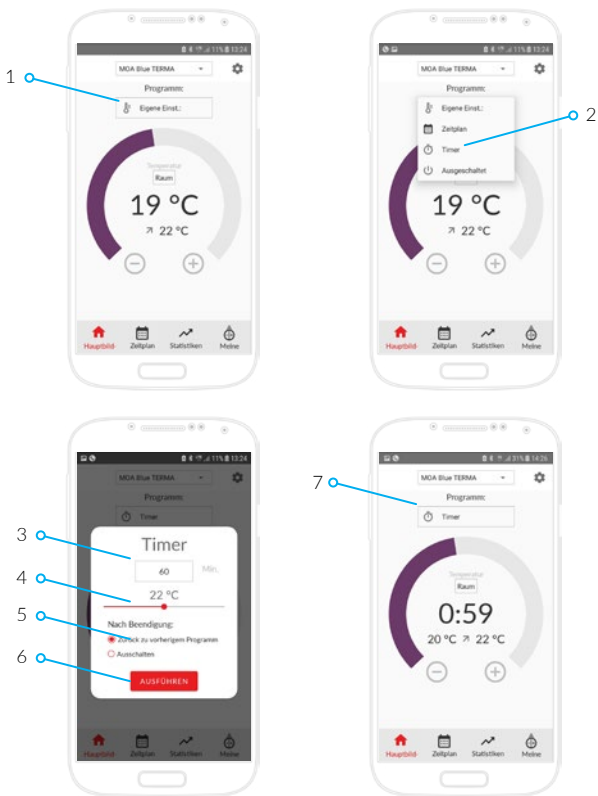


# Einstellung des Zeitplans

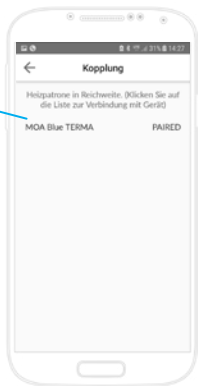
(2)



# Einstellen der Timer Funktion

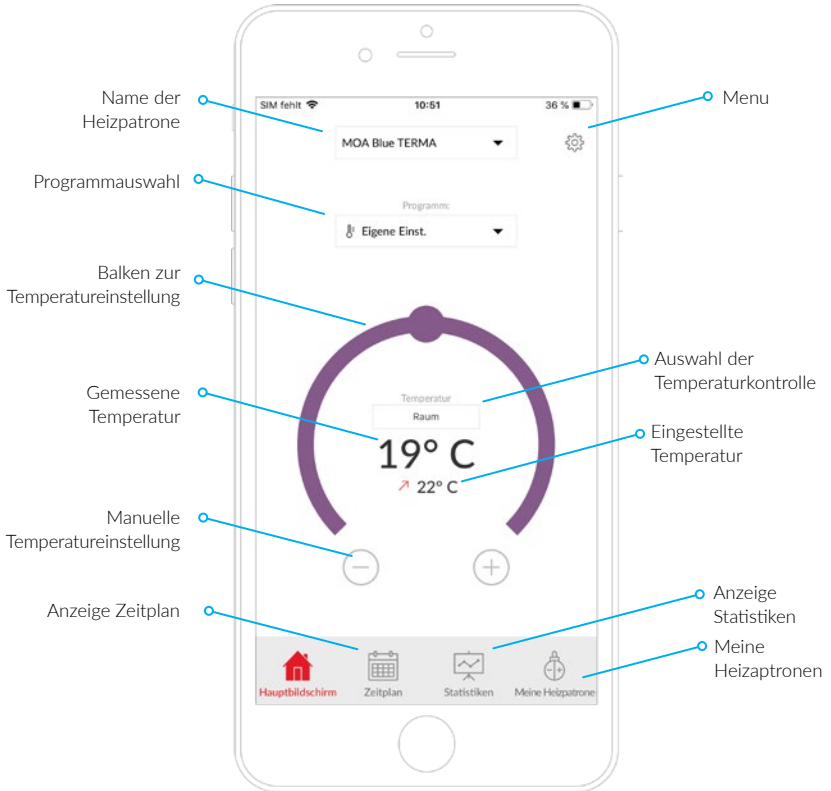


# Hinzufügen einer neuen Heizpatrone



# Hauptmenü

(Aktives Menü)





# Meine Heizpatronen

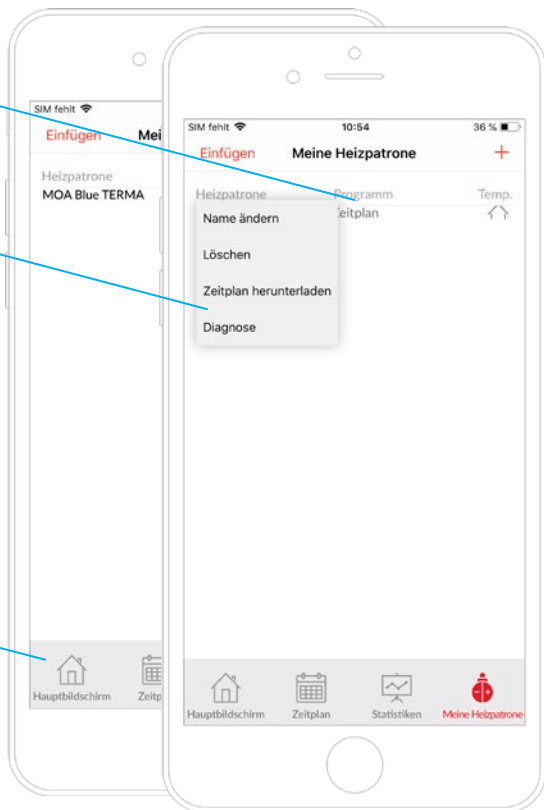
(Informationsbildschirm)



Informationen über die  
aktuellen Einstellungen

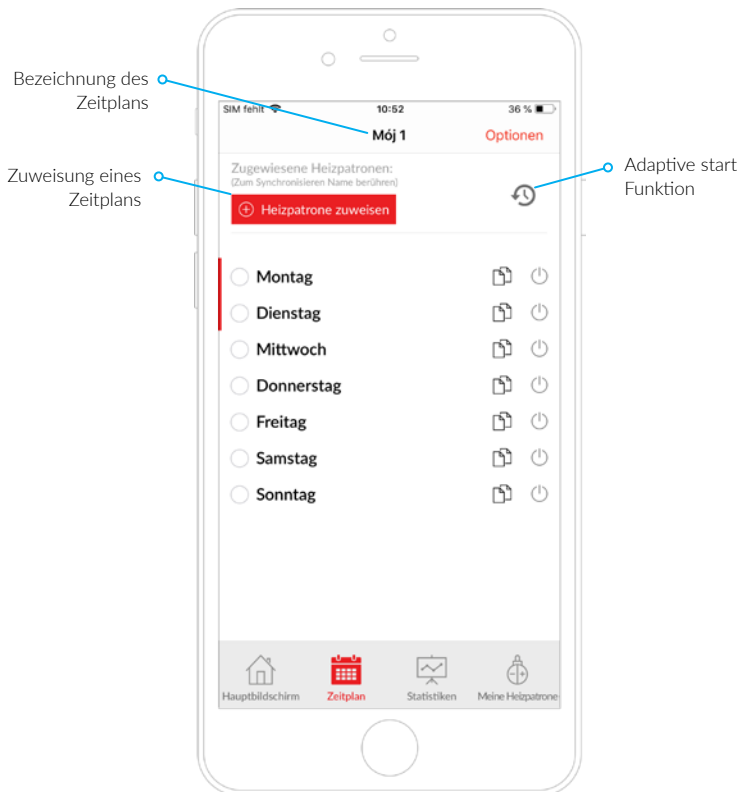
Auswählbare  
Aktionen

Zurück zum  
Hauptmenü



# Zeitplan

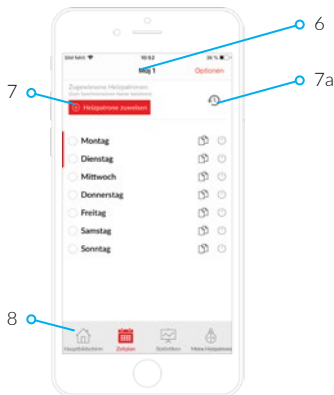
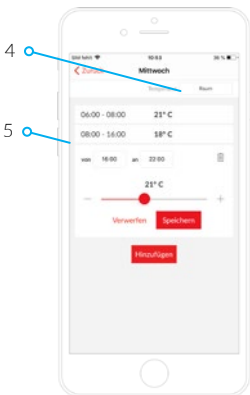
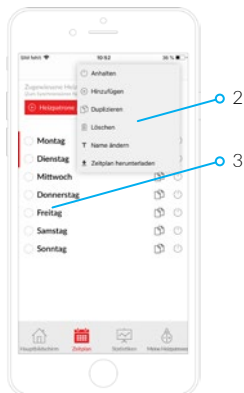
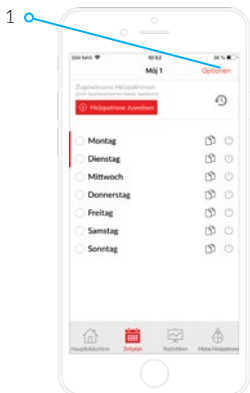
(Aktives Menü)



# Einstellung des Zeitplans

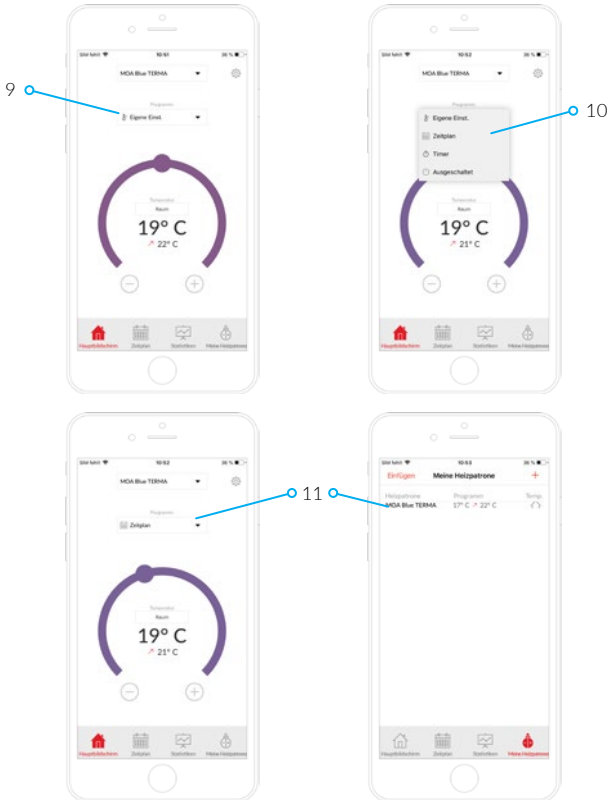


(1)

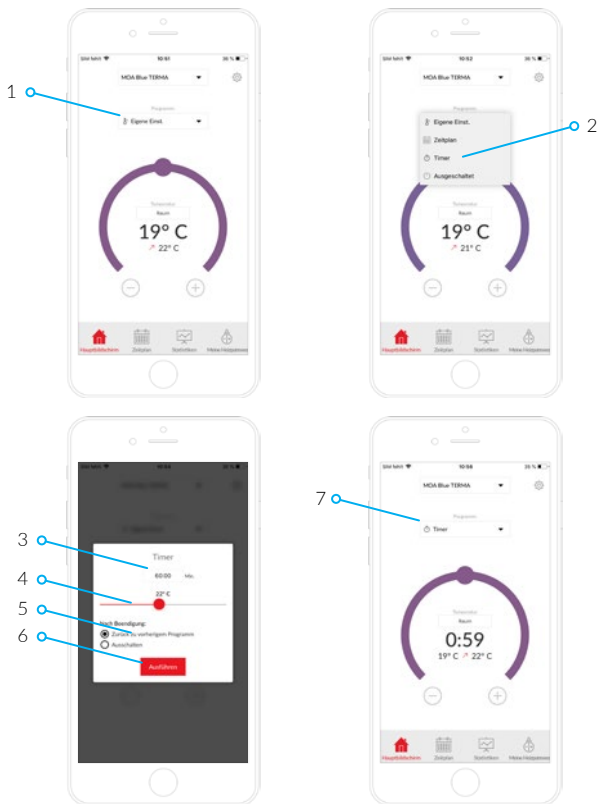


# Einstellung des Zeitplans

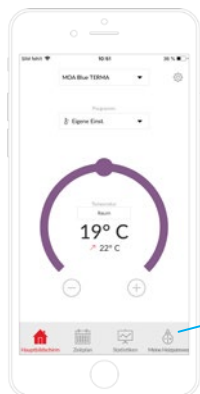
(2)



# Einstellen der Timer Funktion



# Hinzufügen einer neuen Heizpatrone



# Index



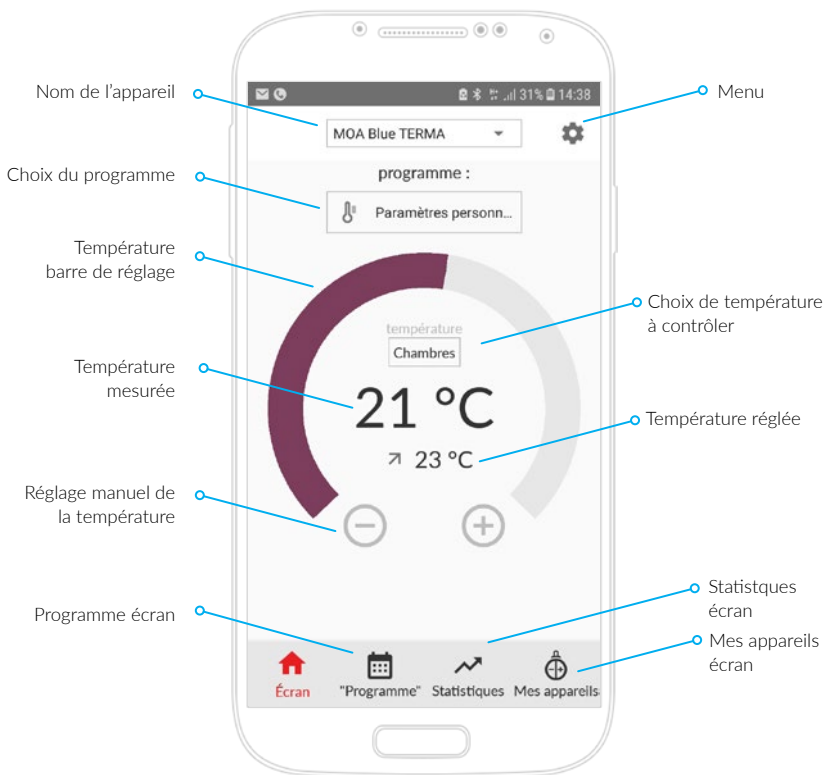
Écran principal	48
Mes appareils	49
Programme	50
Réglage du programme	51
Réglage du timer	53



Écran principal	55
Mes appareils	56
Programme	57
Réglage du programme	58
Réglage du timer	60
Ajouter un kit résistance	61

# Écran principal

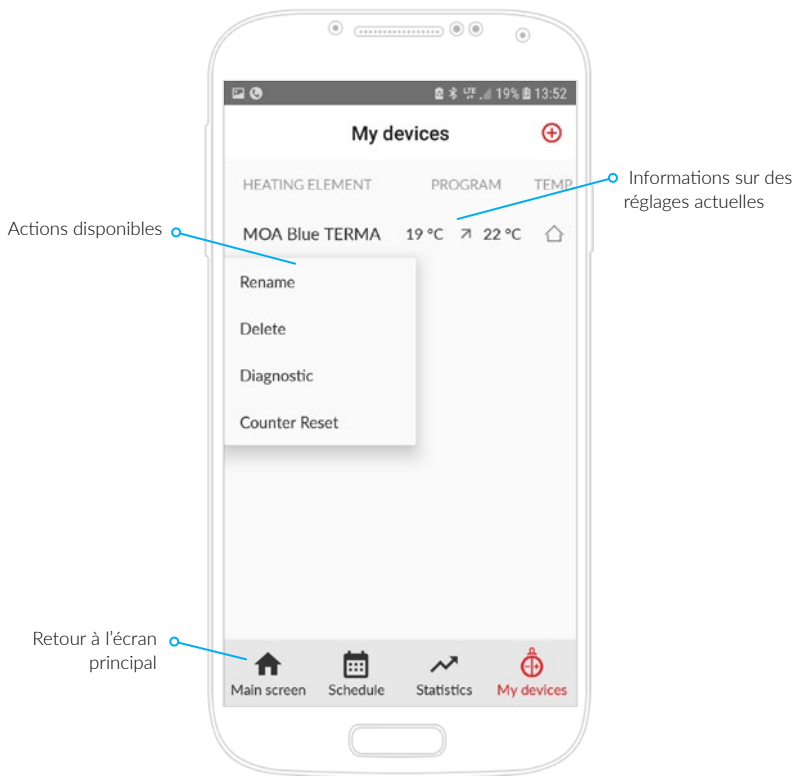
(écran actif)





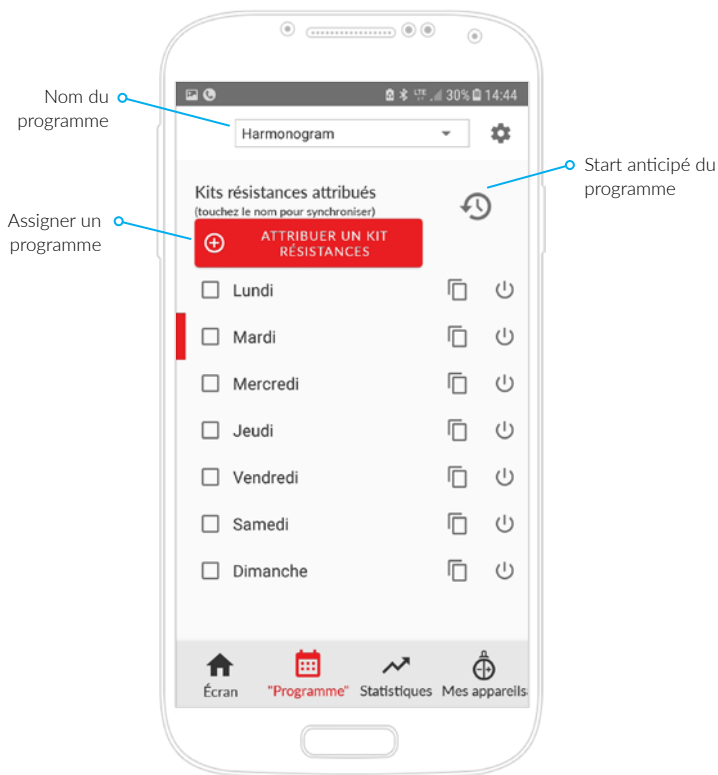
# Mes appareils

(écran d'information)



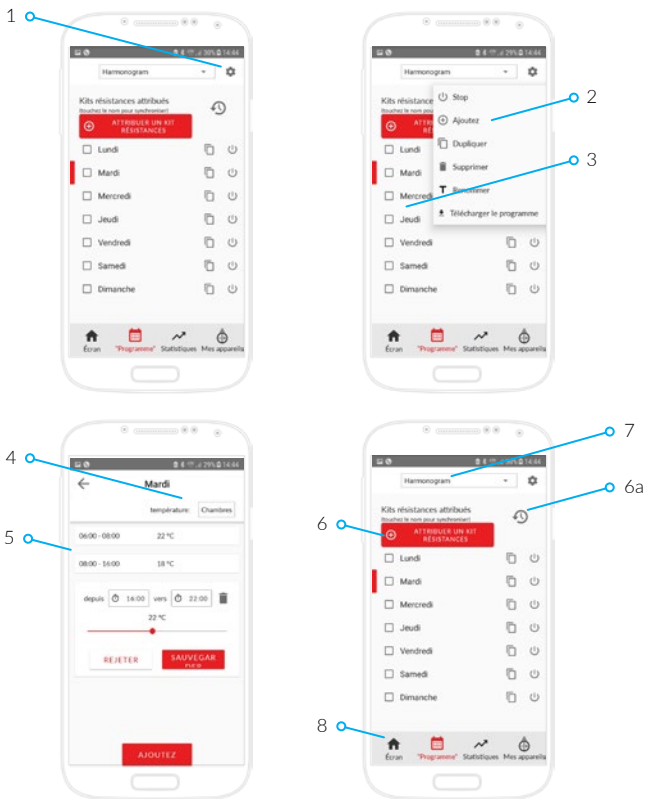
# Programme

(écran actif)



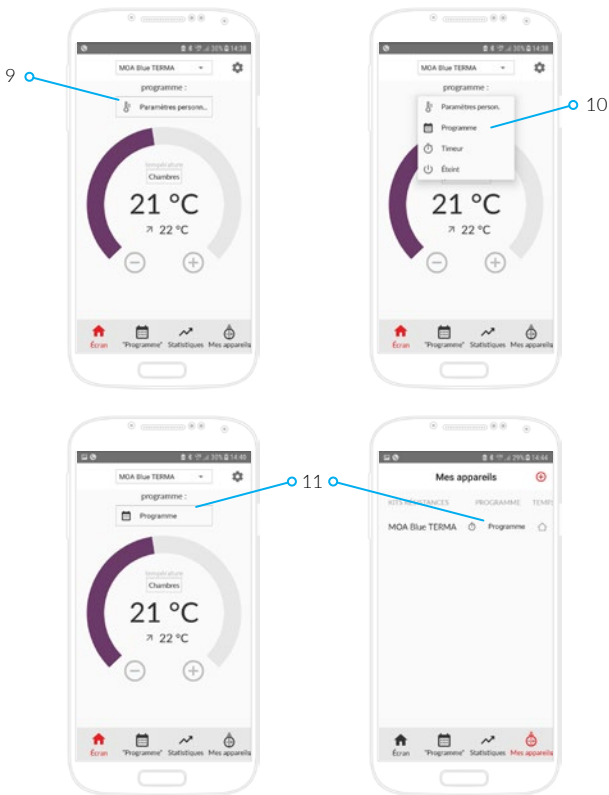
# Réglage du programme

(1)

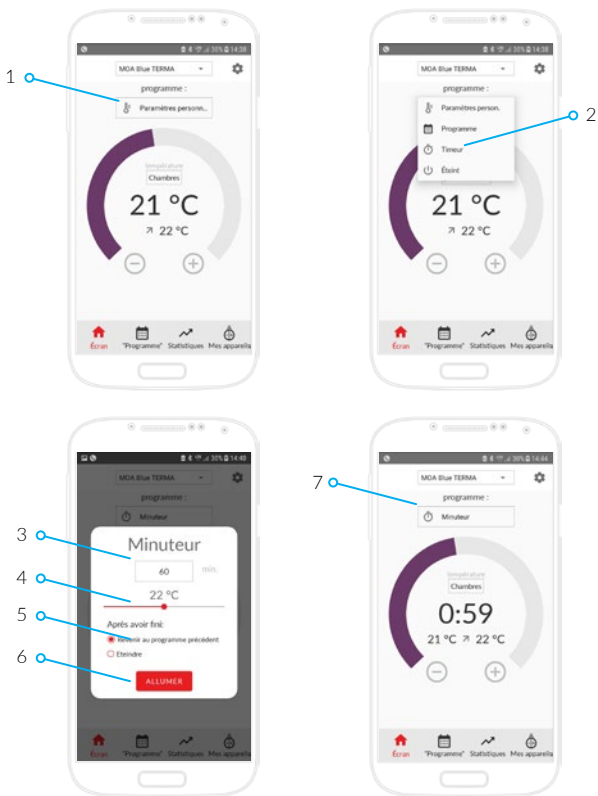


# Réglage du programme

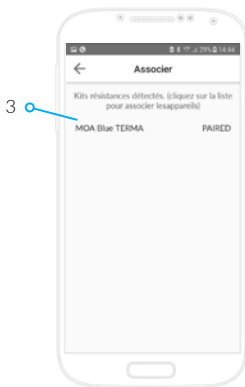
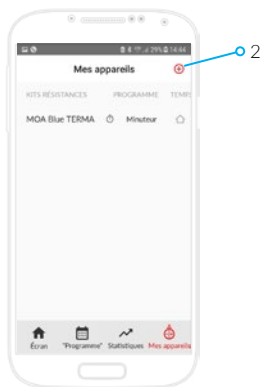
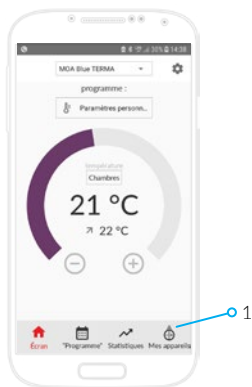
(2)



# Réglage du timer

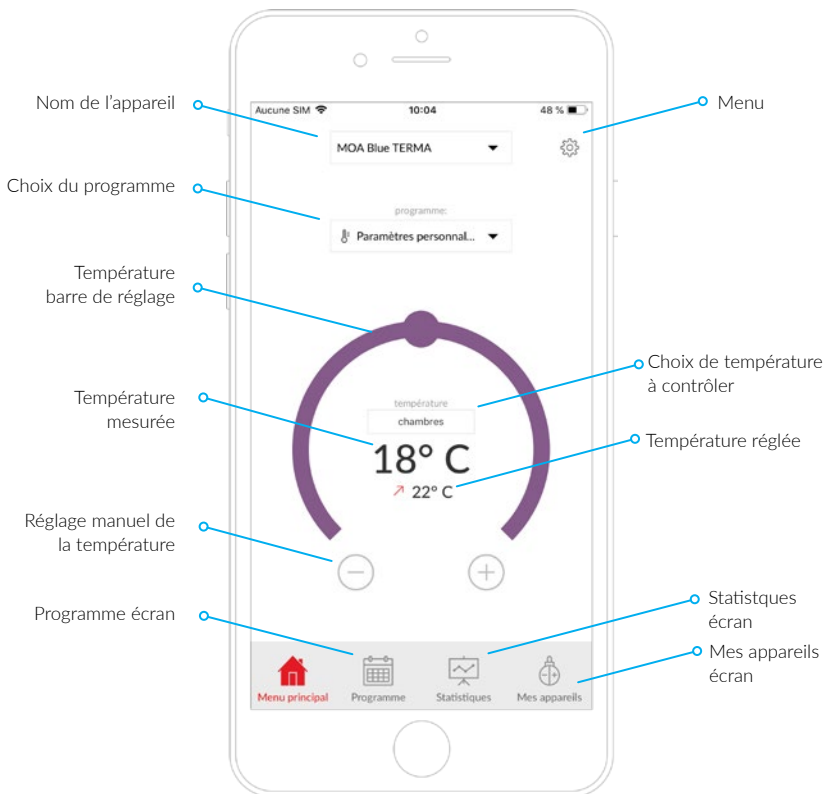


# Ajouter un kit résistance



# Écran principal

(écran actif)



# Mes appareils

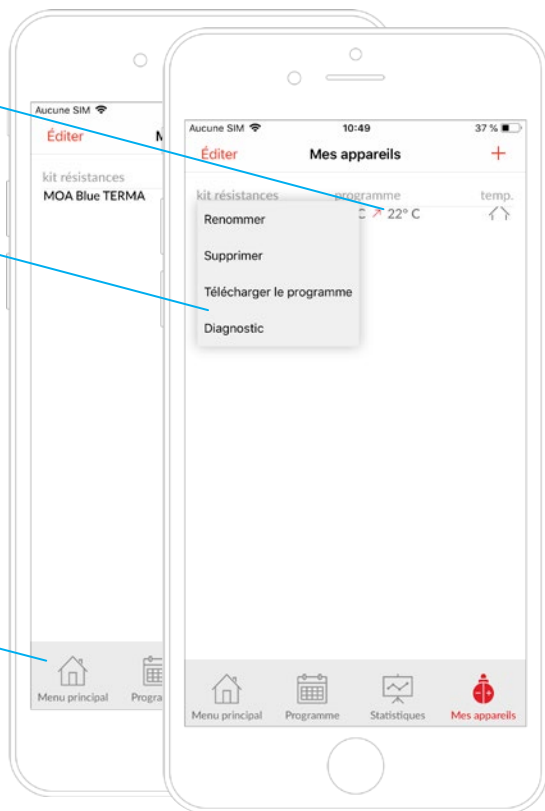
(écran d'information)



Informations sur des  
réglages actuelles

Actions disponibles

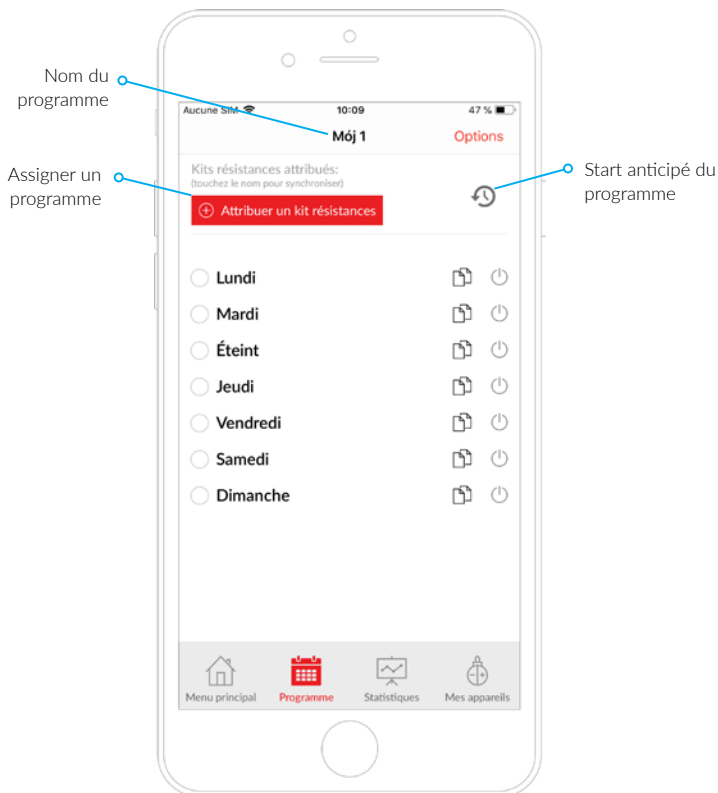
Retour à l'écran  
principal





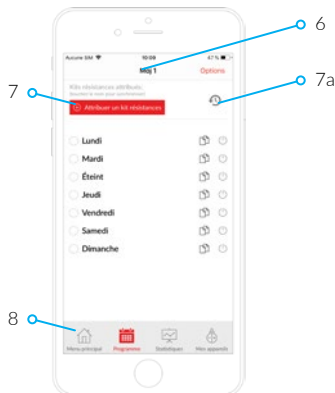
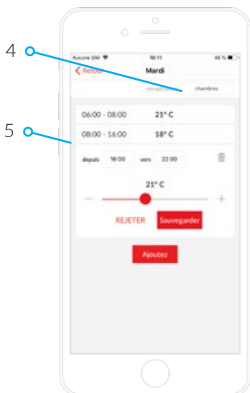
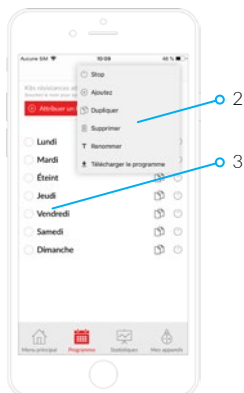
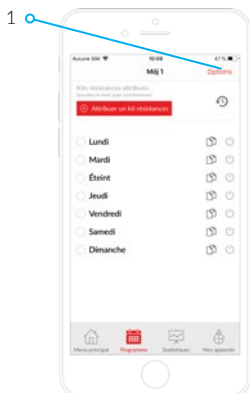
# Programme

(écran actif)



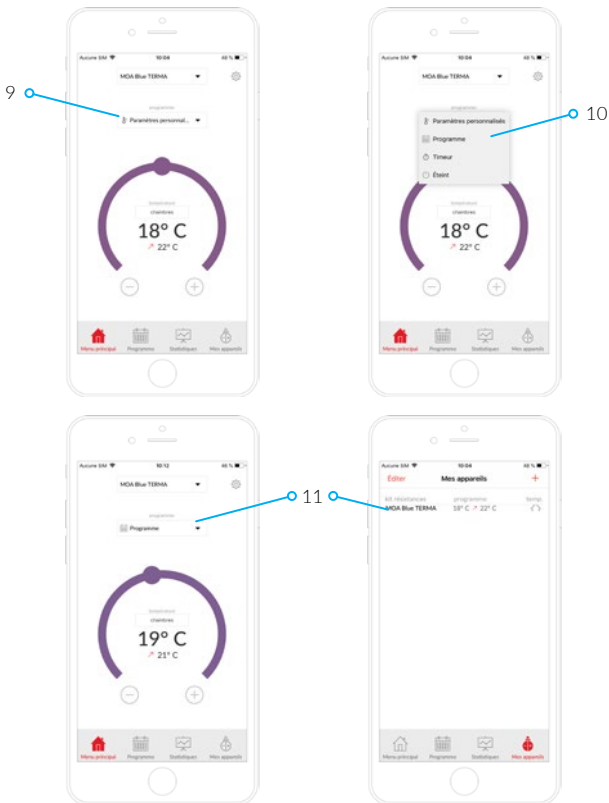
# Réglage du programme

(1)

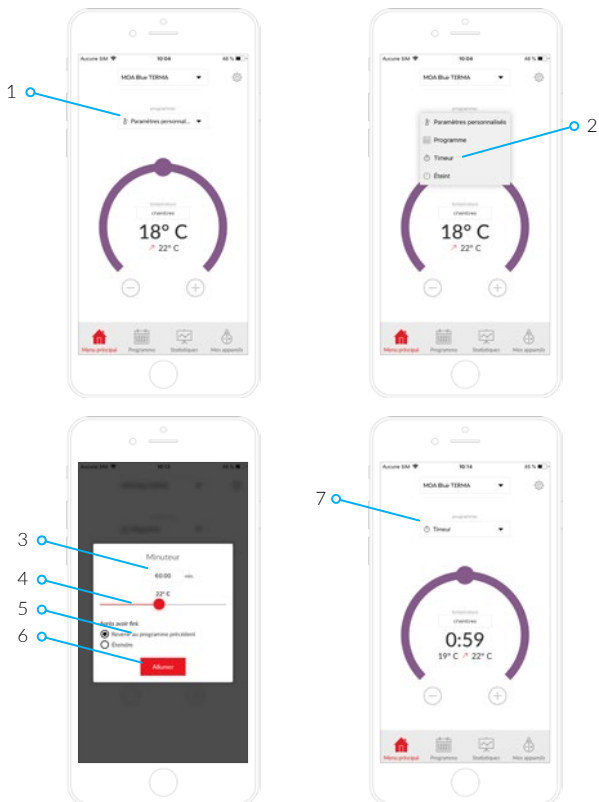


# Réglage du programme

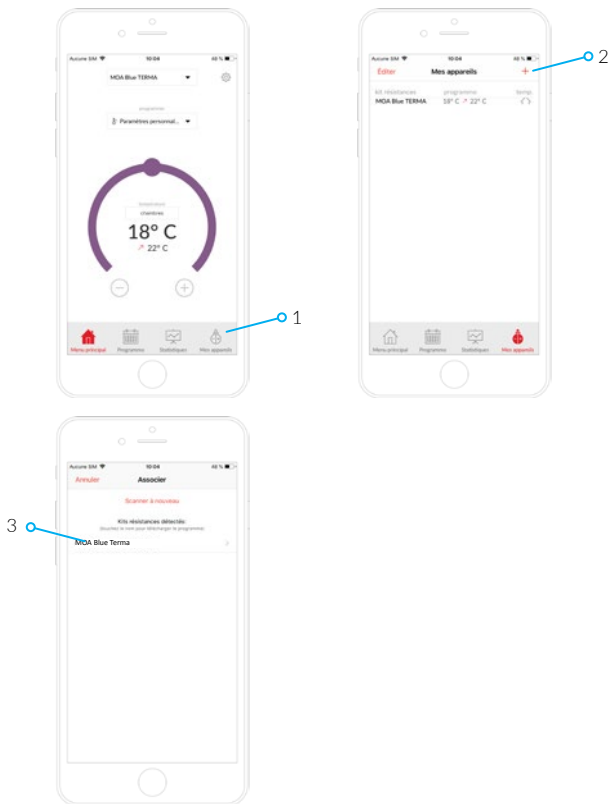
(2)



# Réglage du timer



# Ajouter un kit résistance



# Содержание



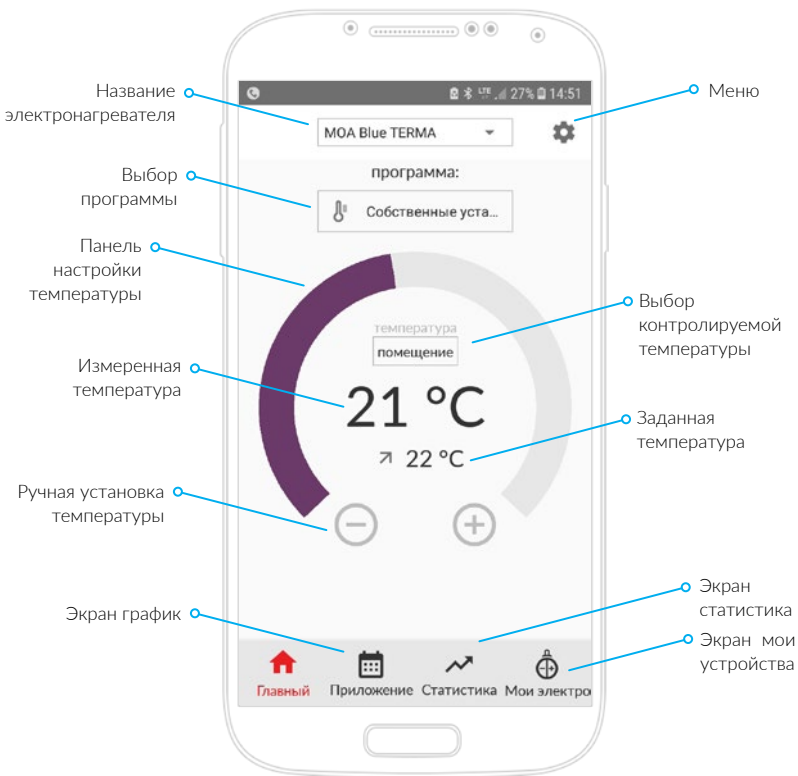
Главный экран приложения	63
Мои электронагреватели	64
График	65
Настройки графика	66
Установка таймера	68
Добавление электронагревателя	69



Главный экран приложения	70
Мои электронагреватели	71
График	72
Настройки графика	73
Установка таймера	75
Добавление электронагревателя	76

# Главный экран приложения

(активный экран)



# Мои электронагреватели

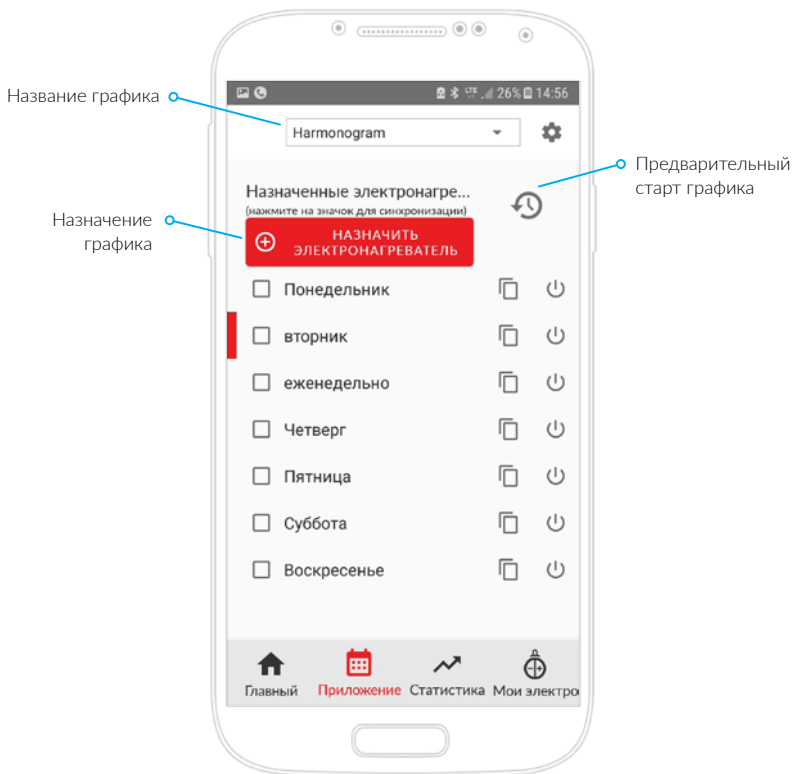
(информационный экран)





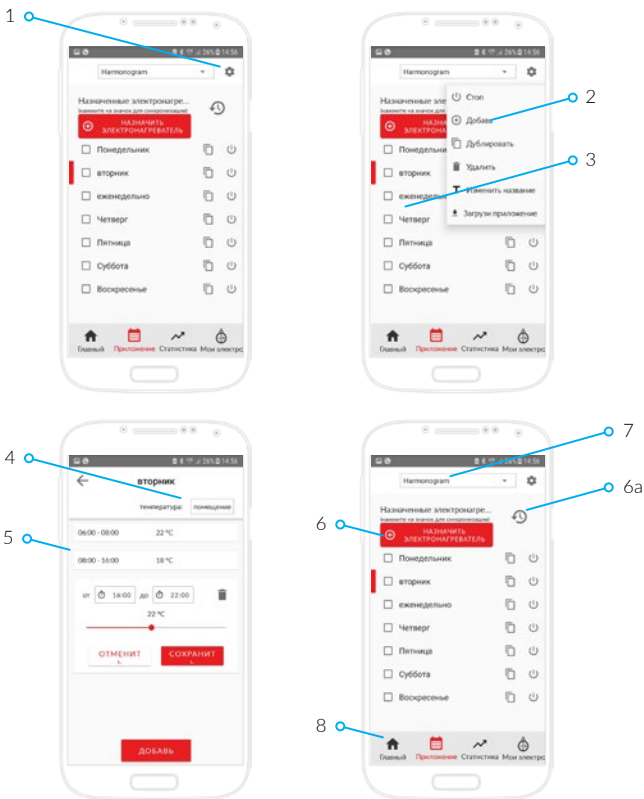
# График

(активный экран)



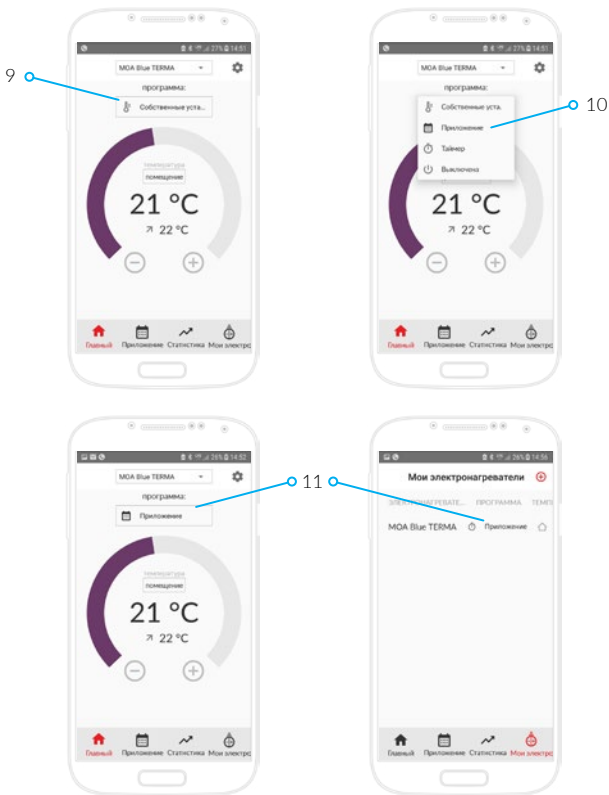
# Настройки графика

(1)

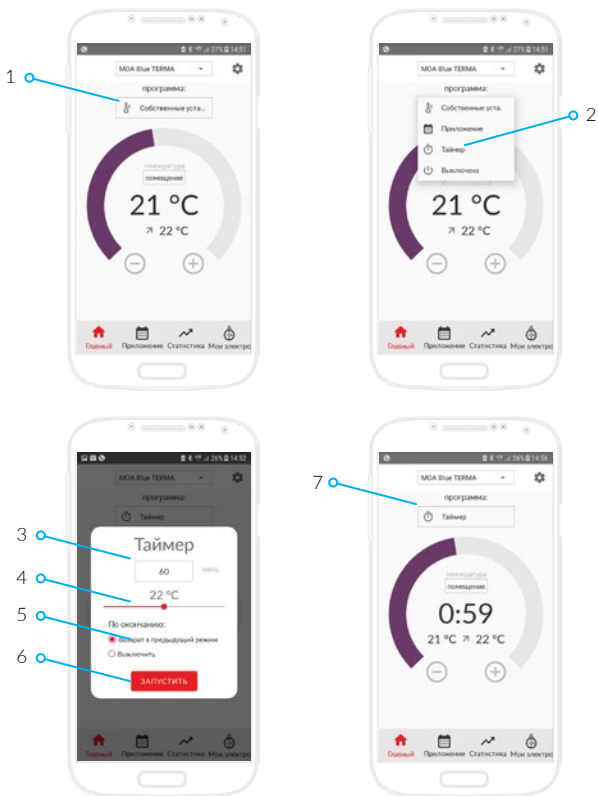


# Настройки графика

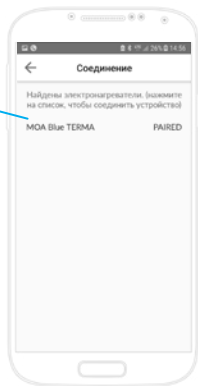
(2)



# Установка таймера

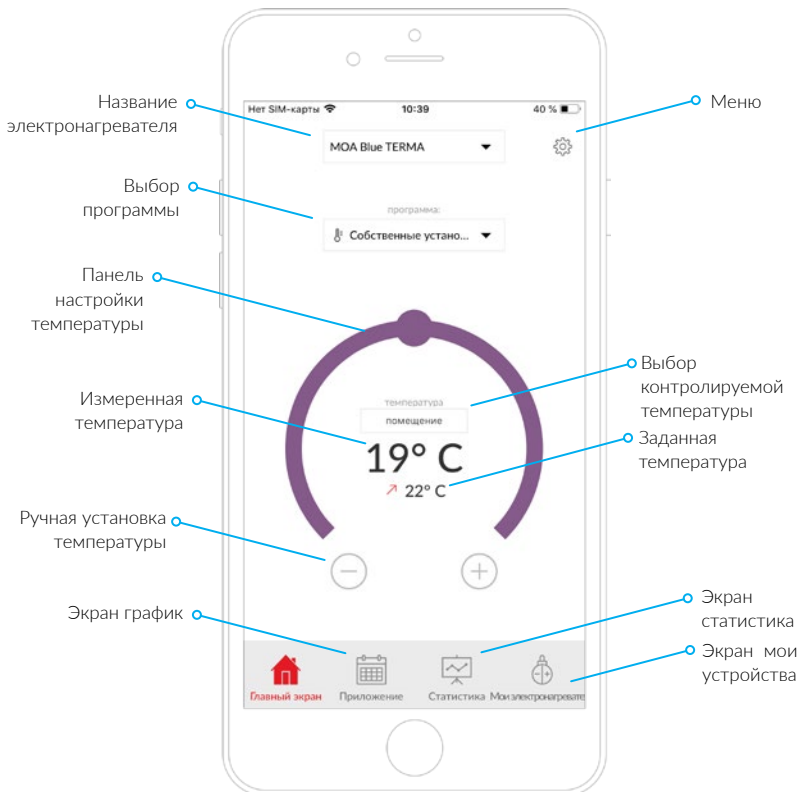


# Добавление электроннагревателя



# Главный экран приложения

(активный экран)



# Мои электронагреватели

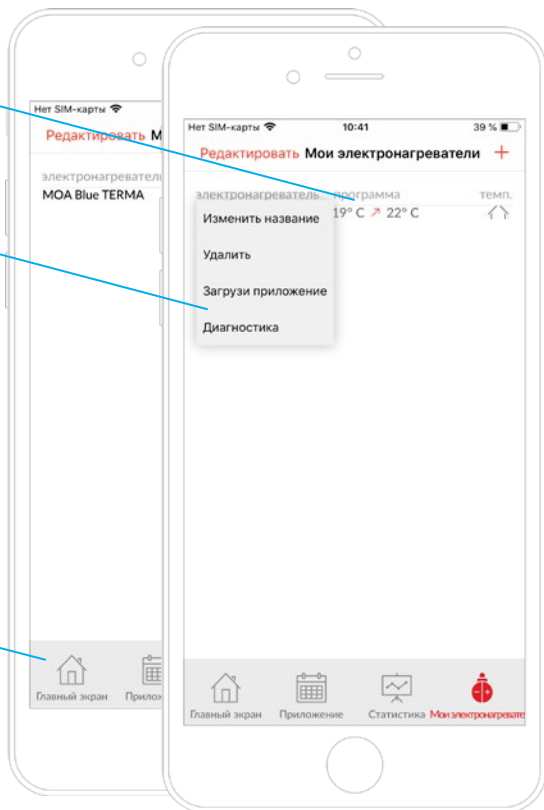
(информационный экран)



Информация о текущих настройках

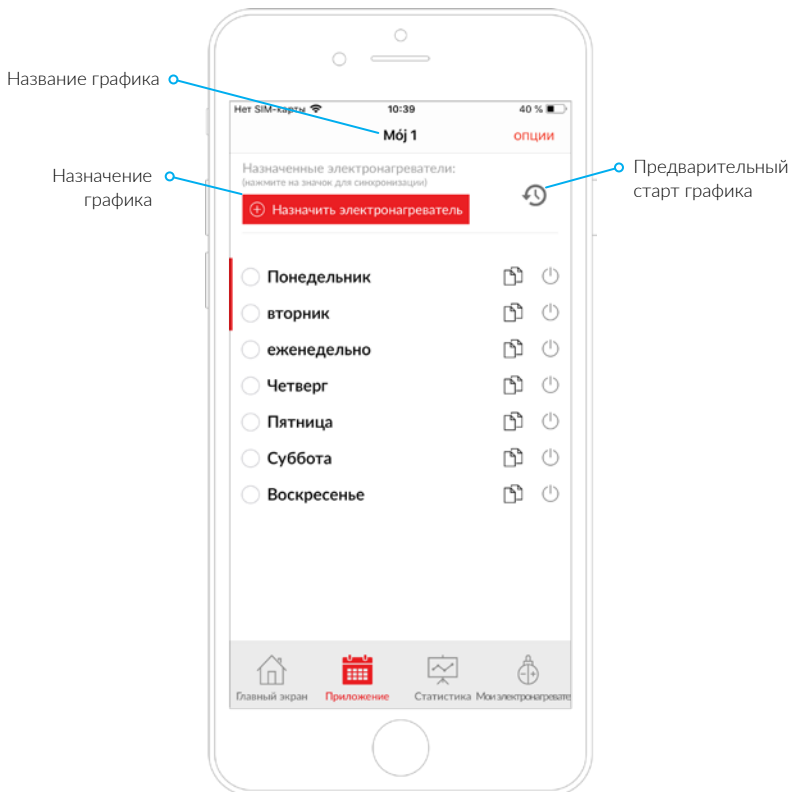
Доступные действия

Вернуться на главный экран



# График

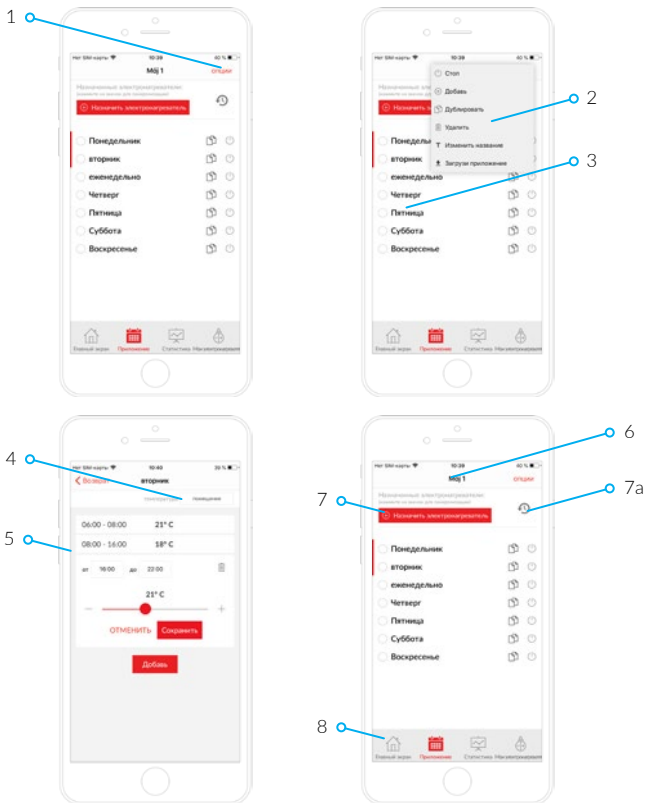
(активный экран)





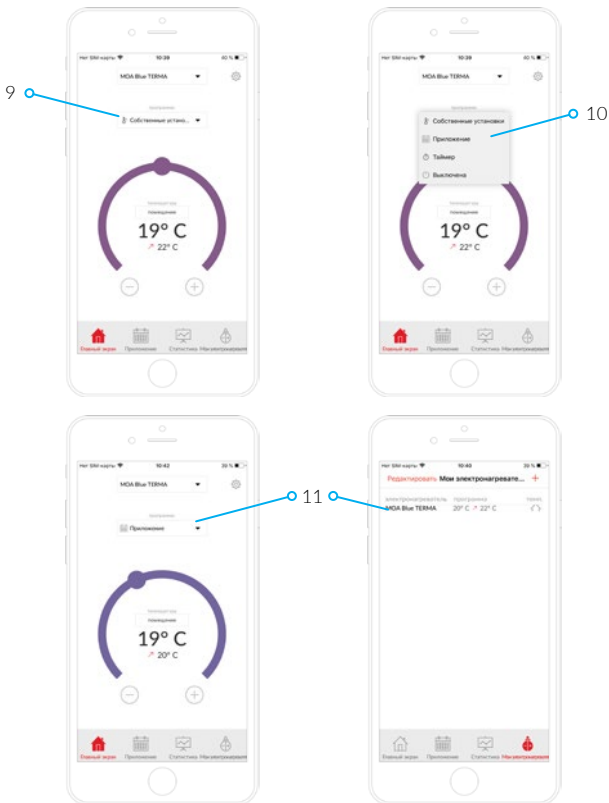
# Настройки графика

(1)

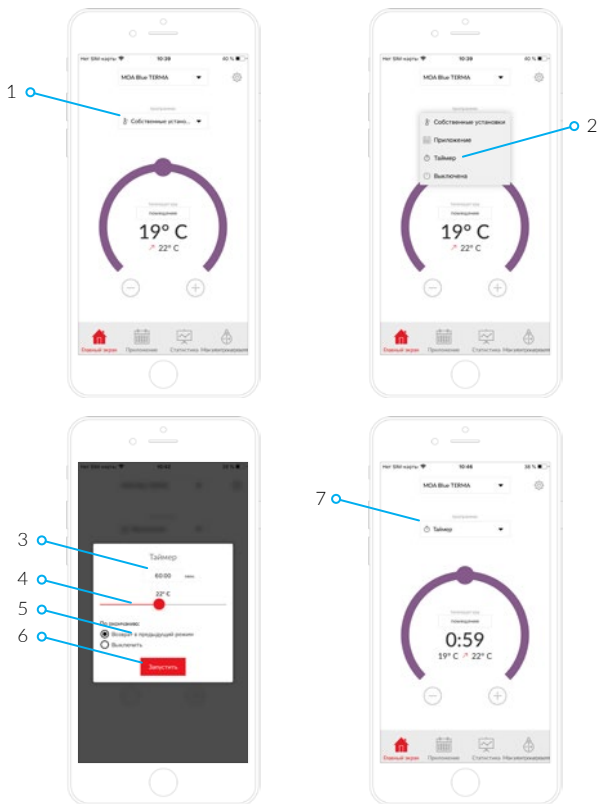


# Настройки графика

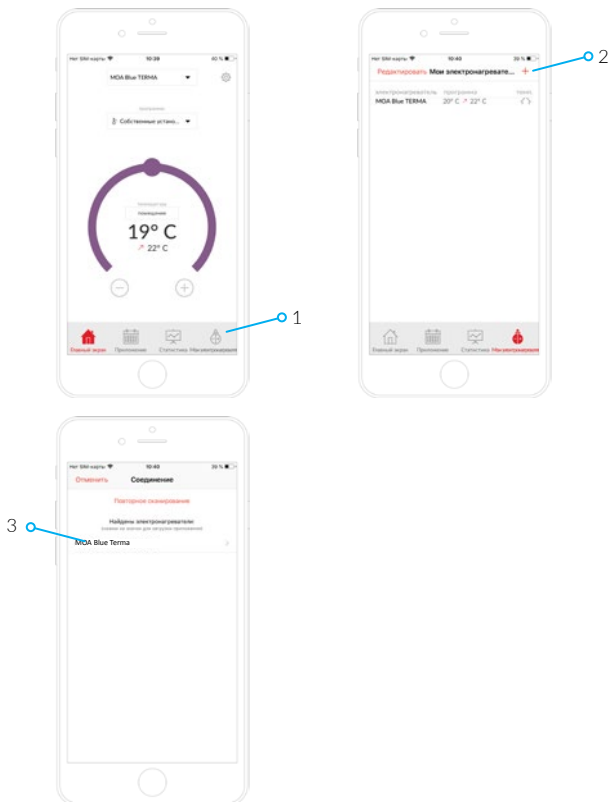
(2)



# Установка таймера



# Добавление электронного нагревателя



# Indice



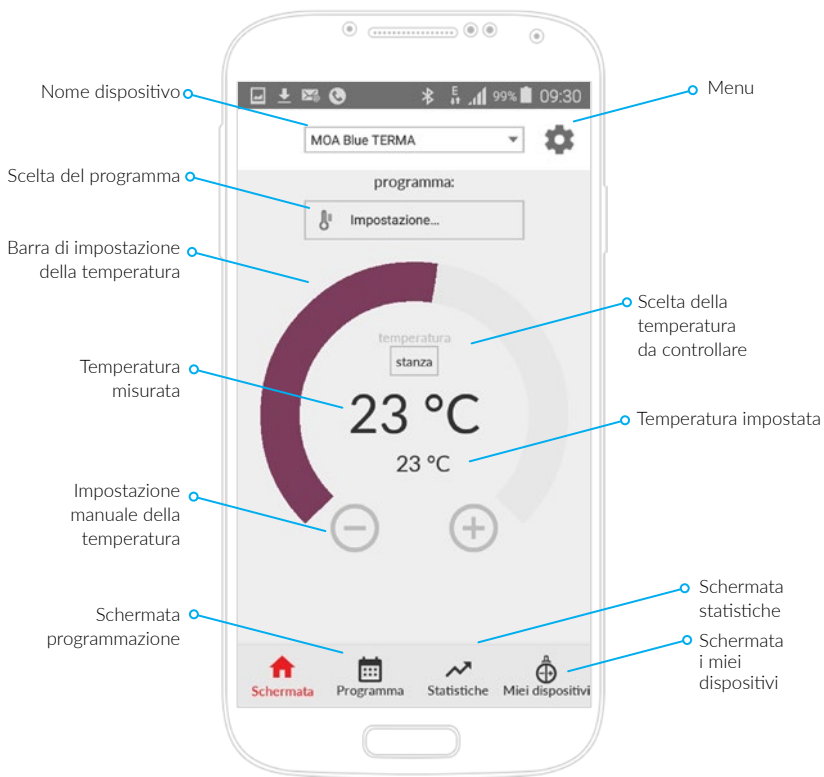
Schermata principale	78
I miei dispositivi	79
Programma	80
Programmazione	81
Regolazione del timer	83
Aggiunta di un dispositivo	84



Schermata principale	85
I miei dispositivi	86
Programma	87
Programmazione	88
Regolazione del timer	90
Aggiunta di un dispositivo	91

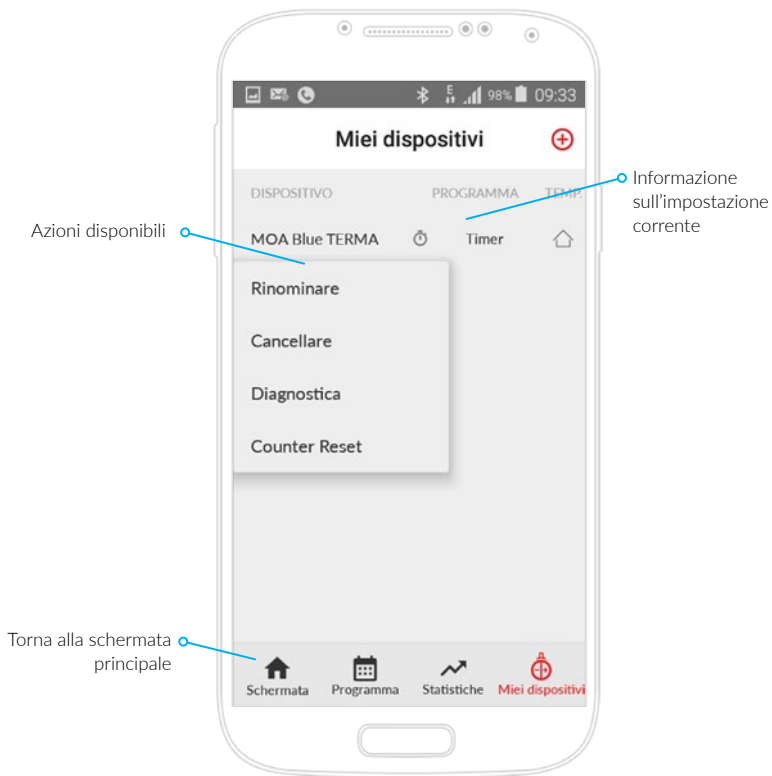
# Schermata principale

(schermata attiva )



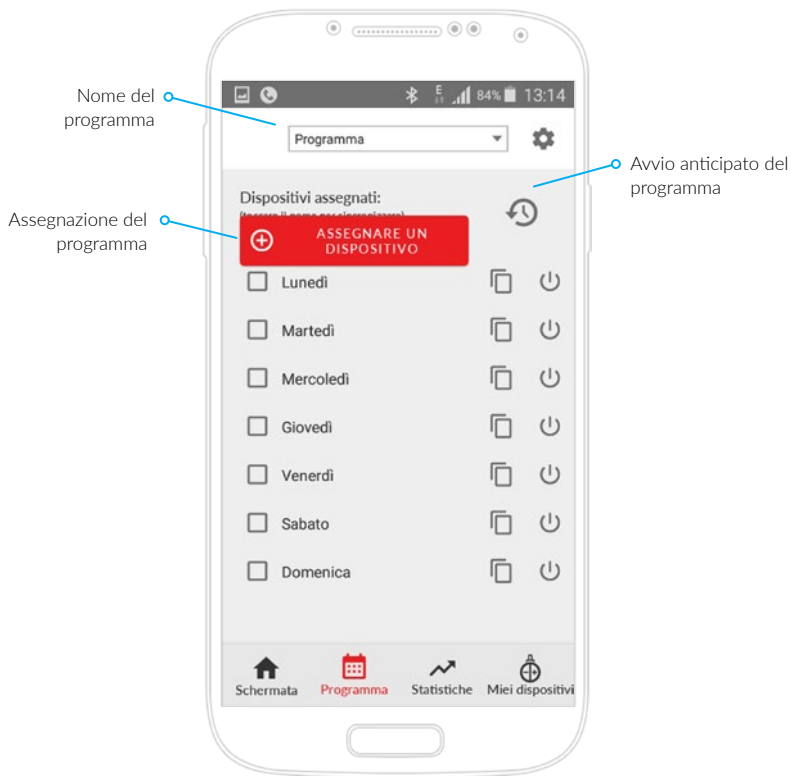
# I miei dispositivi

(schermata informativa)



# Programma

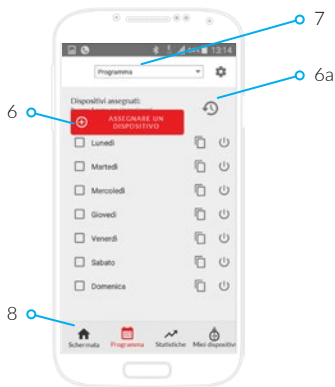
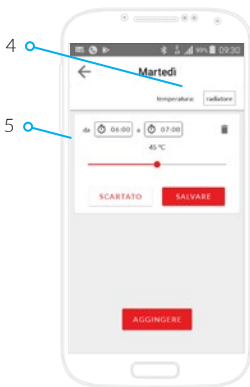
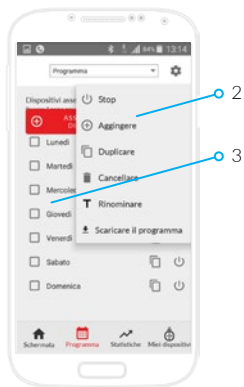
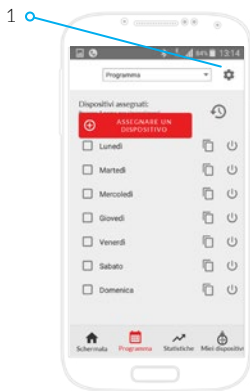
(schermata attiva)





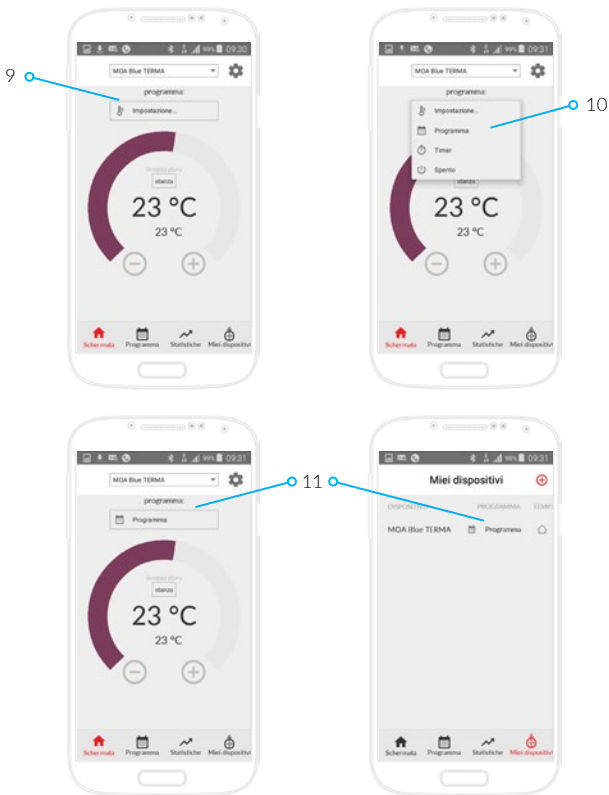
# Programmazione

(1)

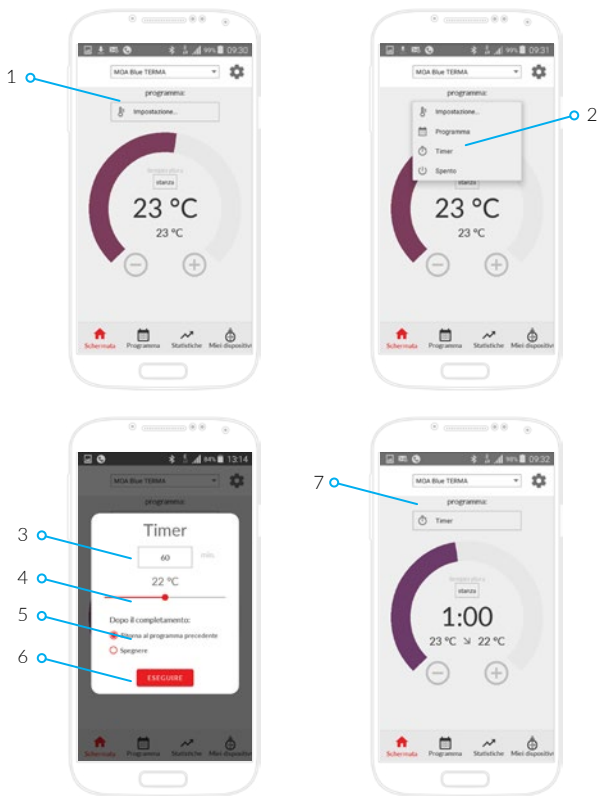


# Programmazione

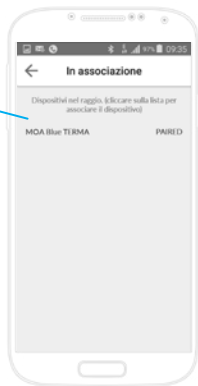
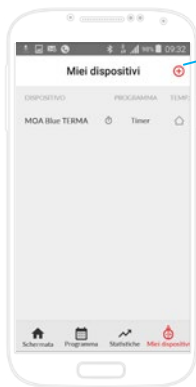
(2)



# Regolazione del timer

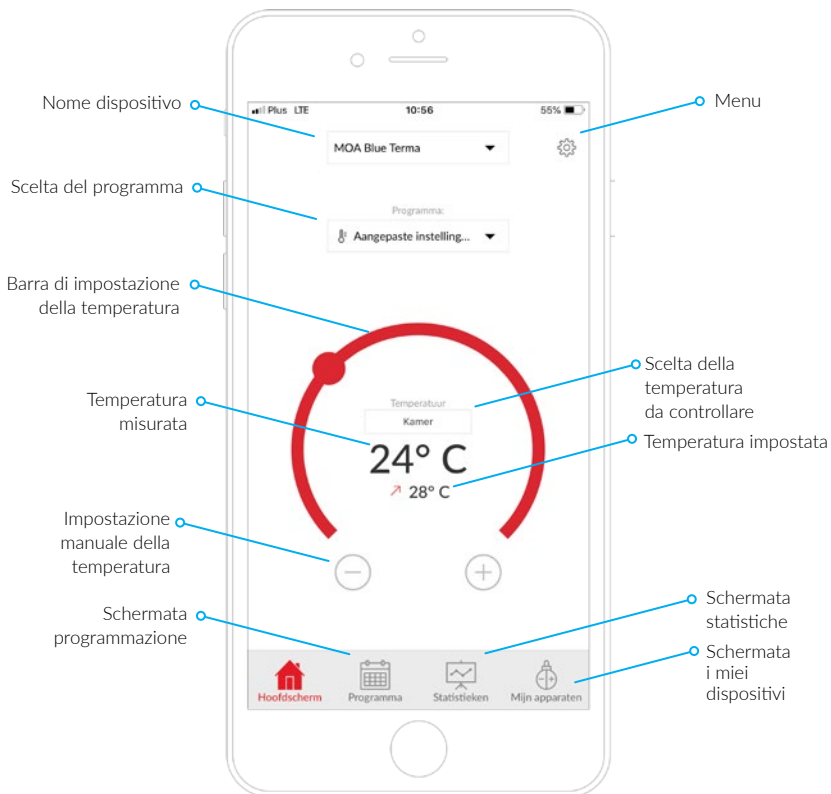


# Aggiunta di un dispositivo



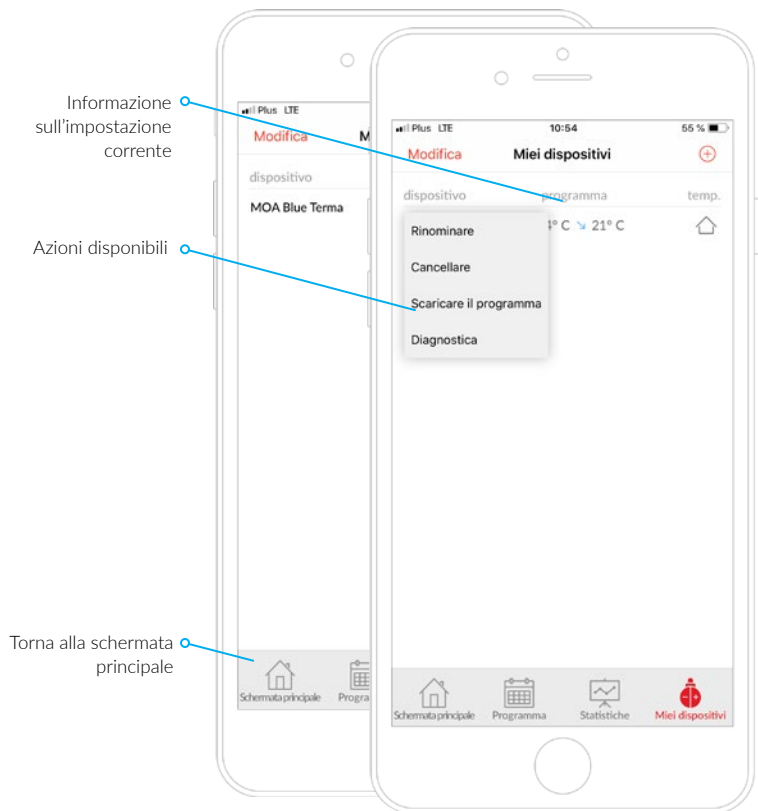
# Schermata principale

(schermata attiva)



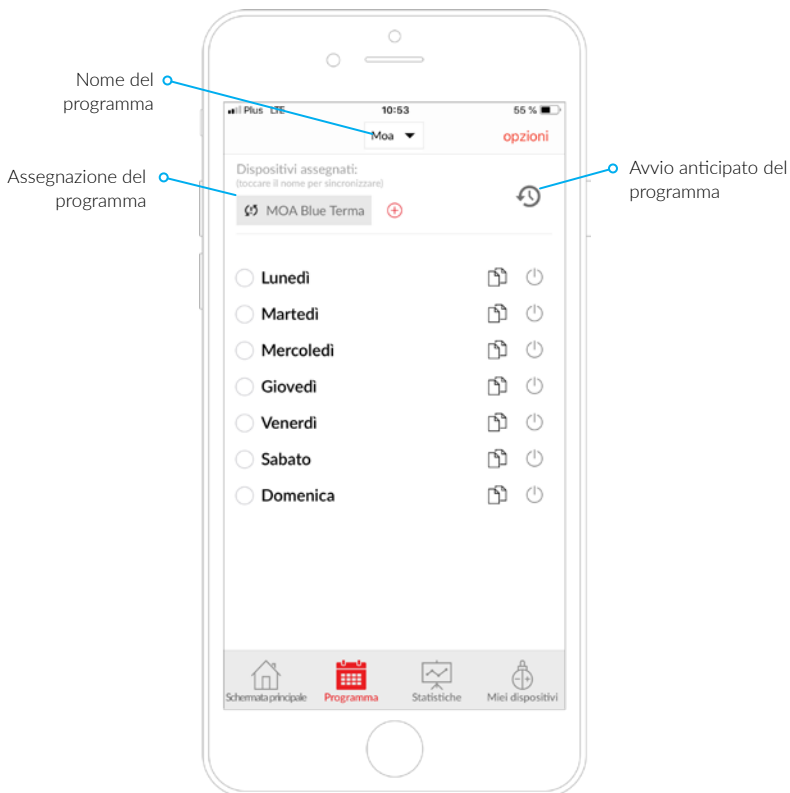
# I miei dispositivi

(schermata informativa)



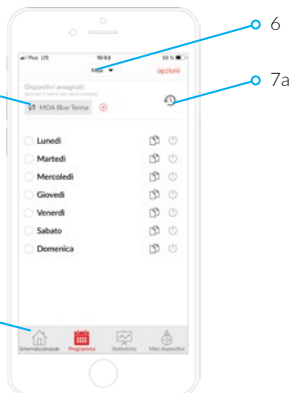
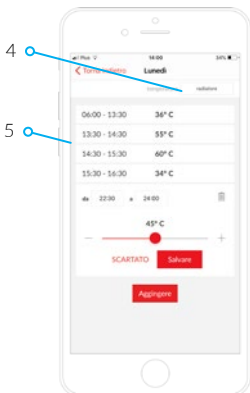
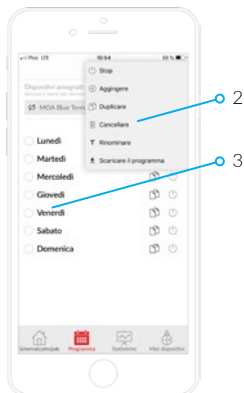
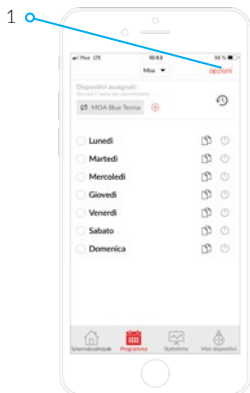
# Programma

(schermata attiva)



# Programmazione

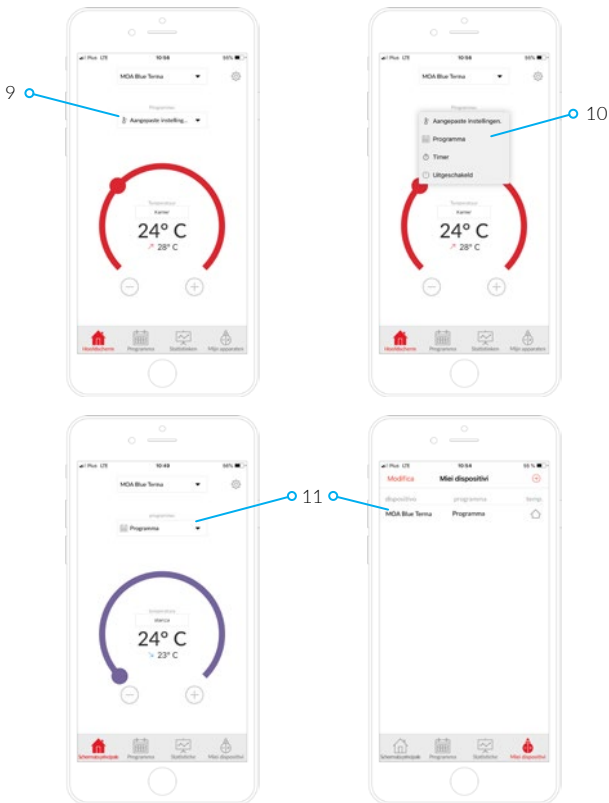
(1)



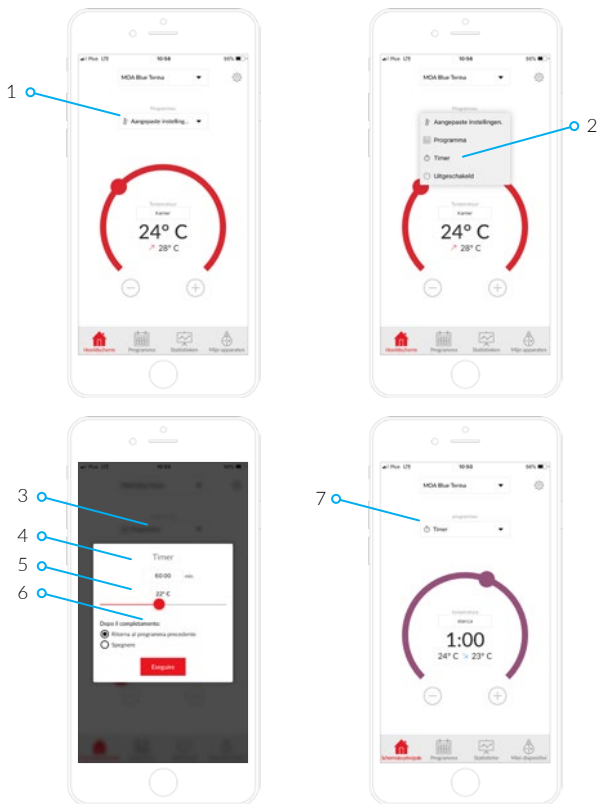


# Programmazione

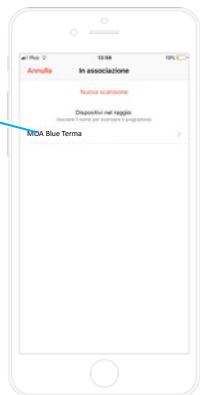
(2)



# Regolazione del timer



# Aggiunta di un dispositivo



# Obsah



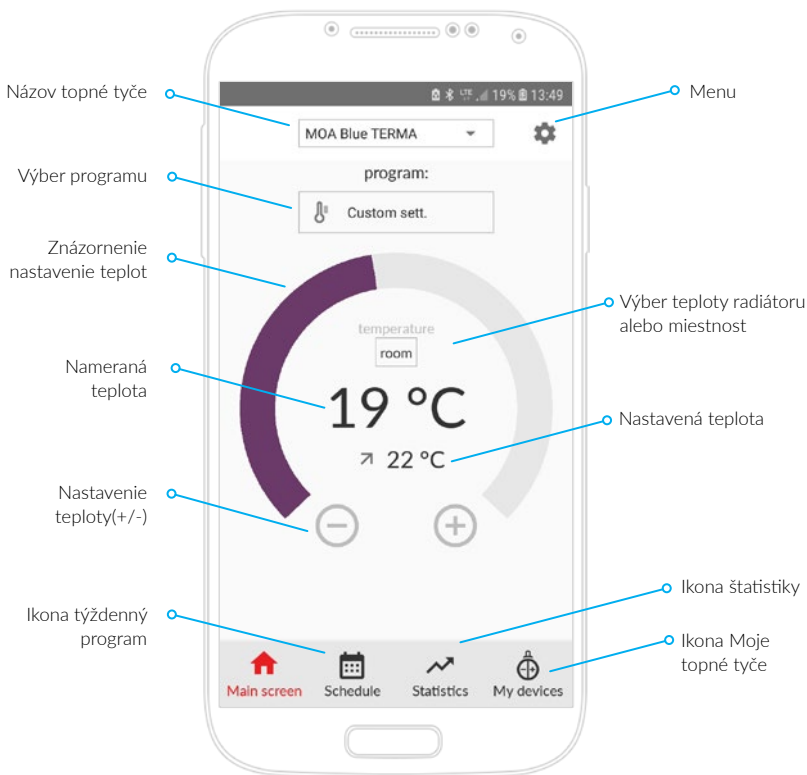
Hlavná ponuka	93
Moje topné tyče	94
Týždenný plán	95
Nastavenie týždenného plánu	96
Nastavenie časovača pre sušenie	98
Pridanie ďalšie topné tyče	99



Hlavná ponuka	100
Moje topné tyče	101
Týždenný plán	102
Nastavenie týždenného plánu	103
Nastavenie časovača pre sušenie	105
Pridanie ďalšie topné tyče	106

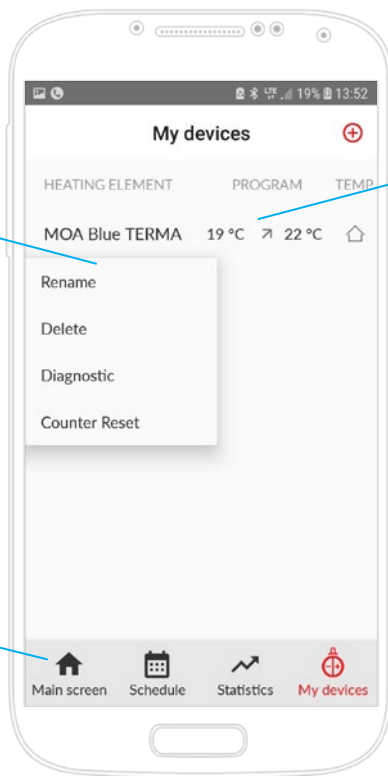
# Hlavná ponuka

(aktívny panel)



# Moje topné tyče

(prehľad)



Možnosti

Informácie  
o aktuálnych  
nastaveniach

Návrat do hlavnej  
ponuky

# Týždenný program

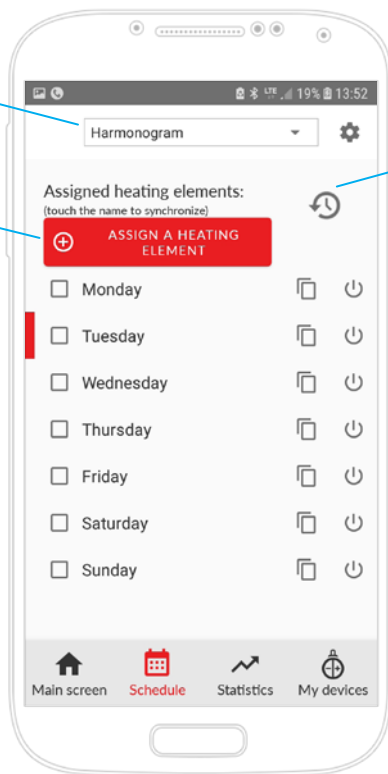
(aktívny panel)



Názov týždenného programu

Pridanie programu

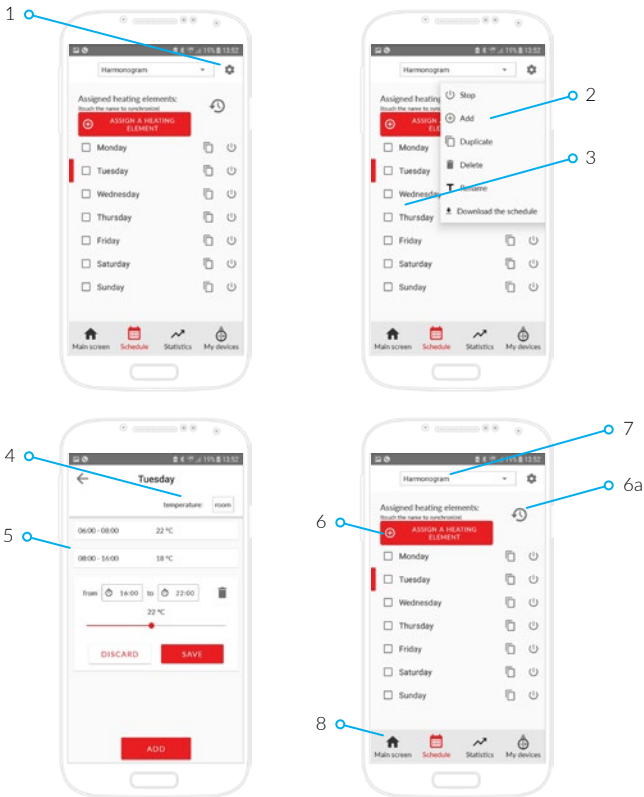
Skoršie štart programu



# Nastavenie týždenného plánu



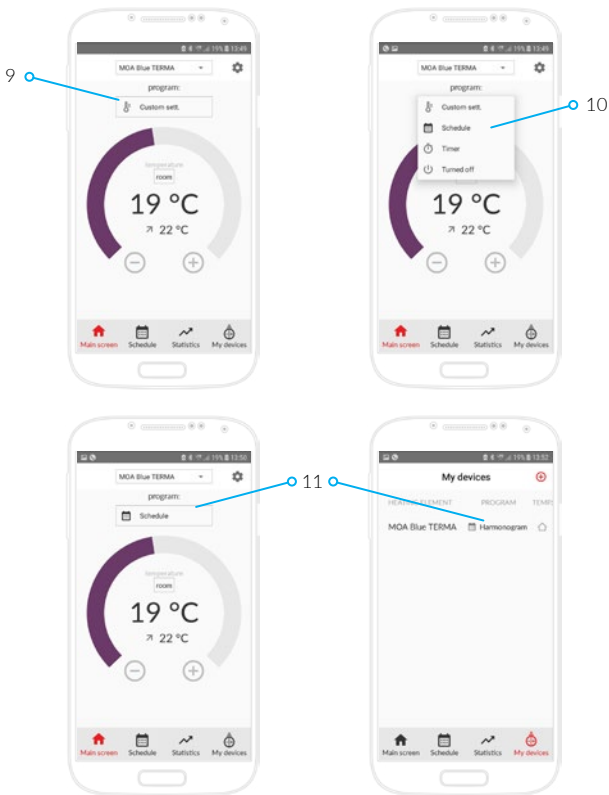
(1)



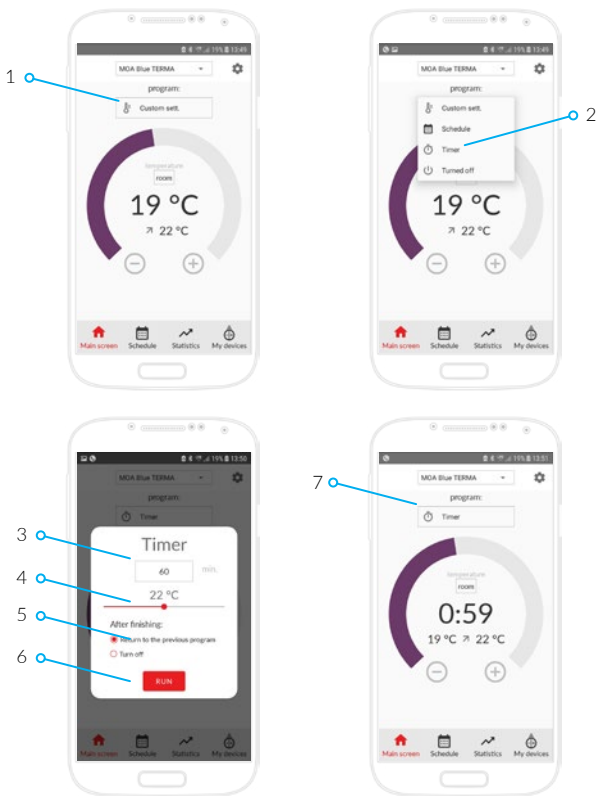


# Nastavenie týždenného plánu

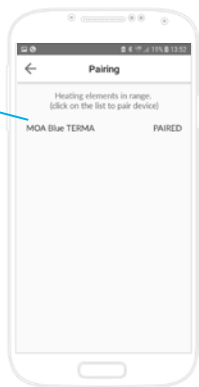
(2)



# Nastavenie časovača pre sušenie

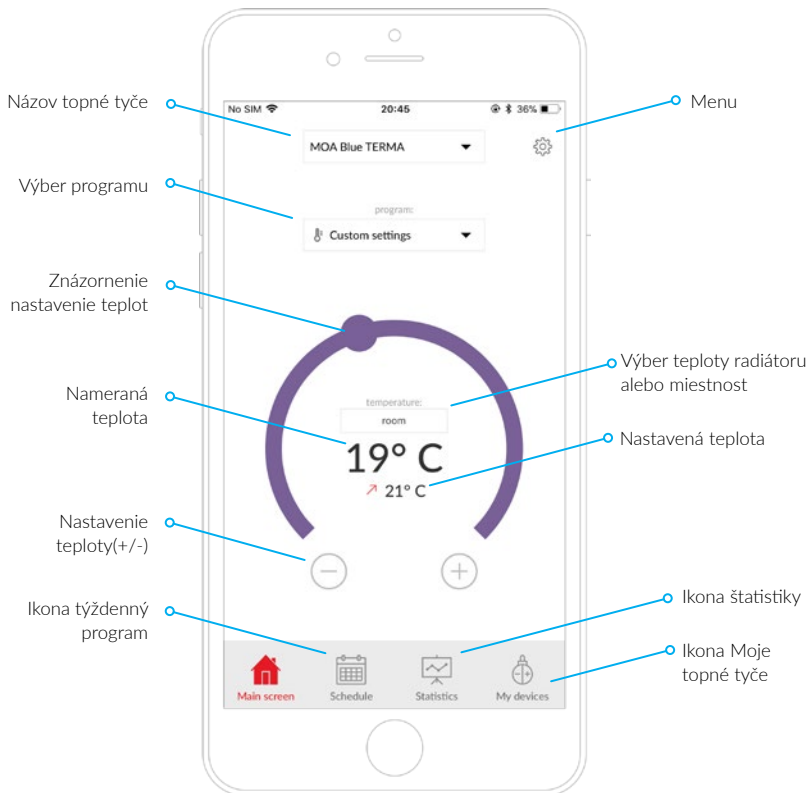


# Pridanie ďalšie topné tyče



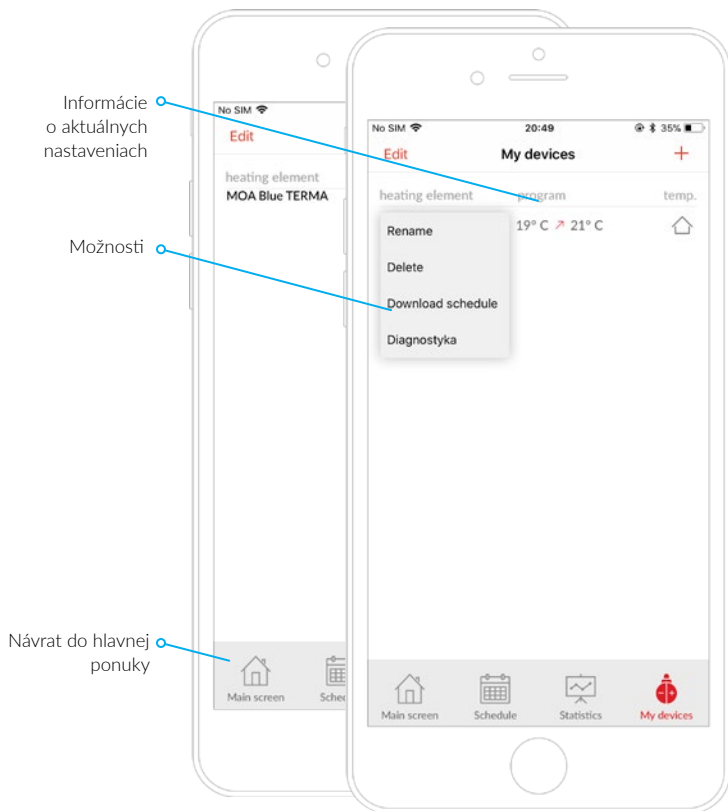
# Hlavná ponuka

(aktívny panel)



# Moje topné tyče

(prehľad)



# Týždenný program

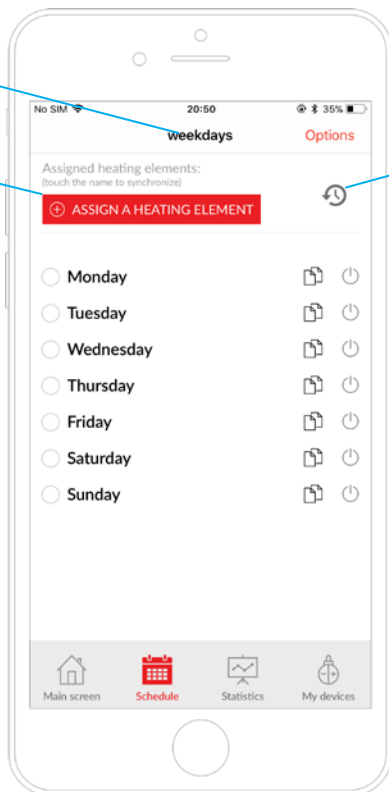
(aktívny panel)



Názov týždenného programu

Pridanie programu

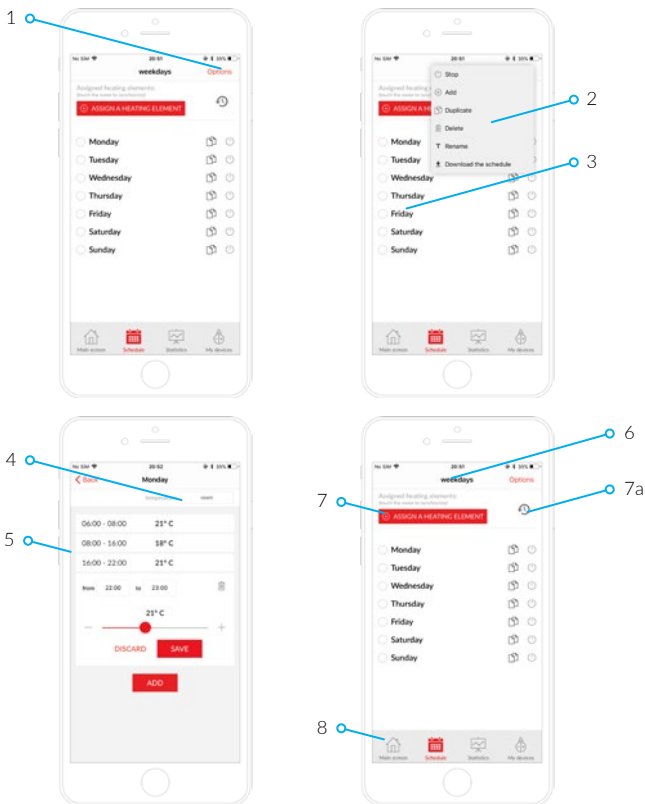
Skoršie štart programu



# Nastavenie týždenného plánu

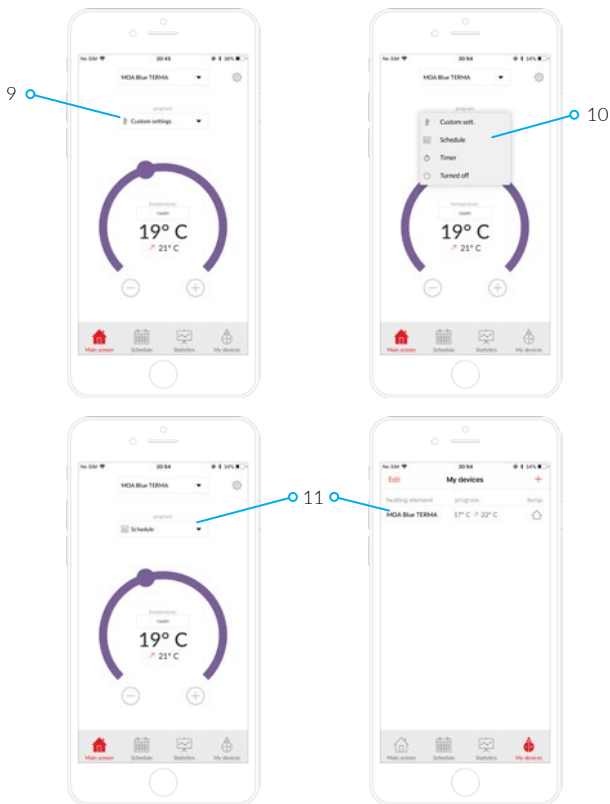


(1)



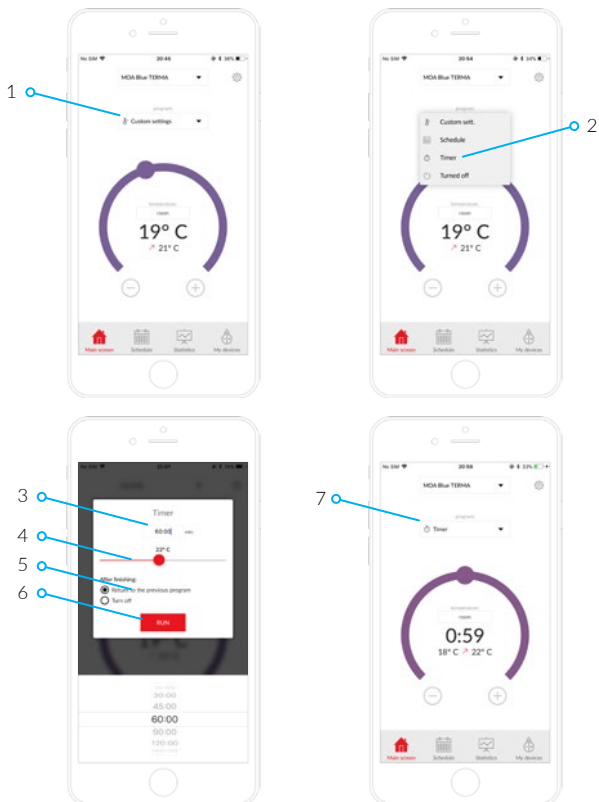
# Nastavenie týždenného plánu

(2)

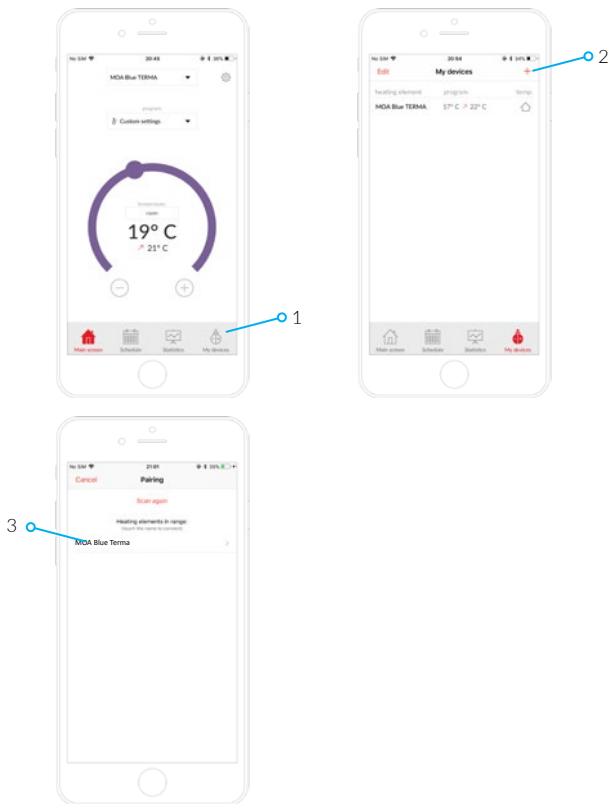




# Nastavenie časovača pre sušenie



# Pridanie ďalšie topné tyče



# Obsah



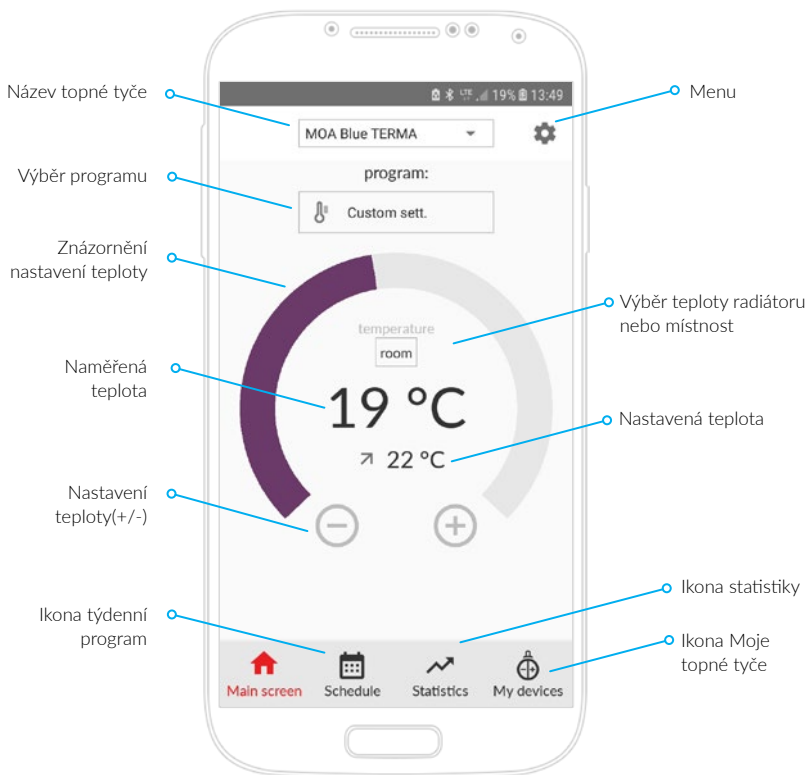
Hlavní nabídka	108
Moje topné tyče	109
Týdenní plán	110
Nastavení týdenního plánu	111
Nastavení časovače pro sušení	113
Přidání další topné tyče	114



Hlavní nabídka	115
Moje topné tyče	116
Týdenní plán	117
Nastavení týdenního plánu	118
Nastavení časovače pro sušení	120
Přidání další topné tyče	121

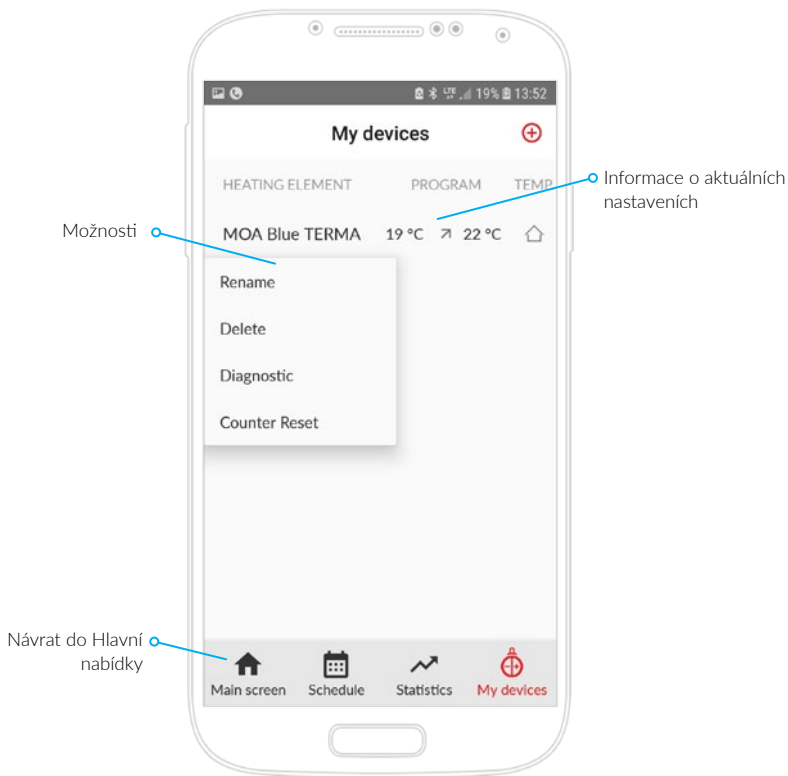
# Hlavní nabídka

(aktivní panel)



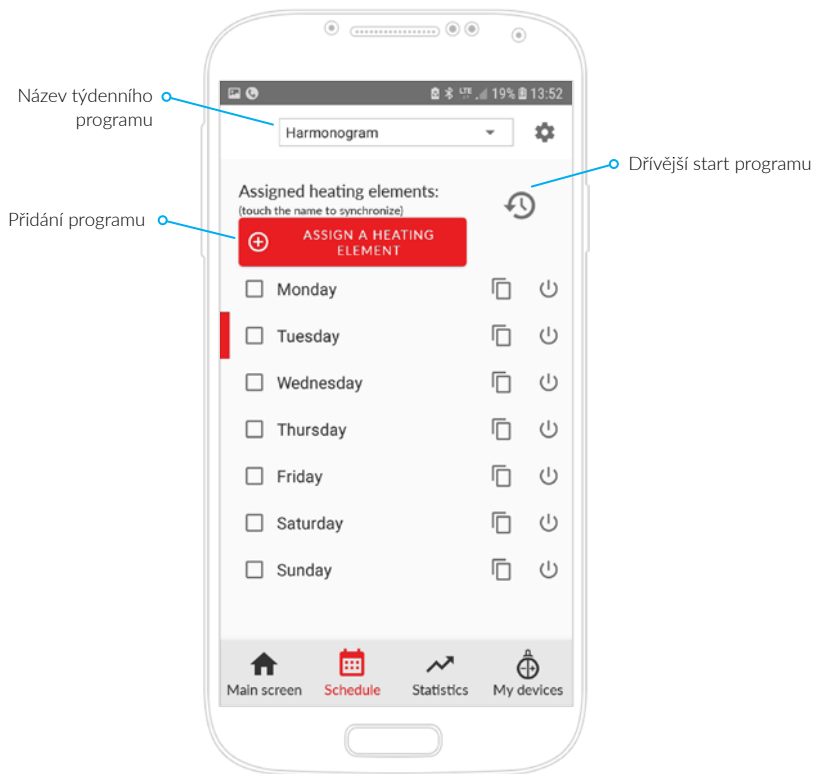
# Moje topné tyče

(přehled)



# Týdenní program

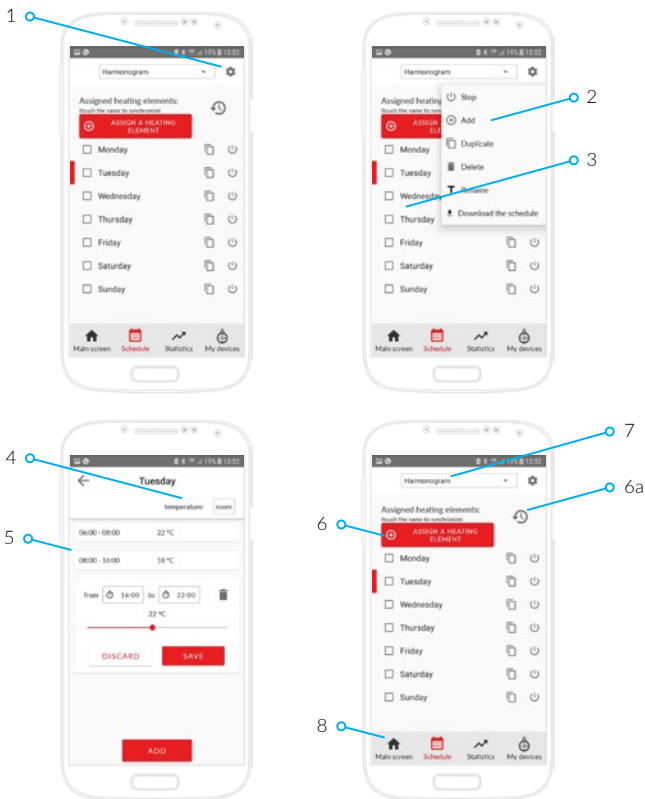
(aktivní panel)



# Nastavení týdenního programu

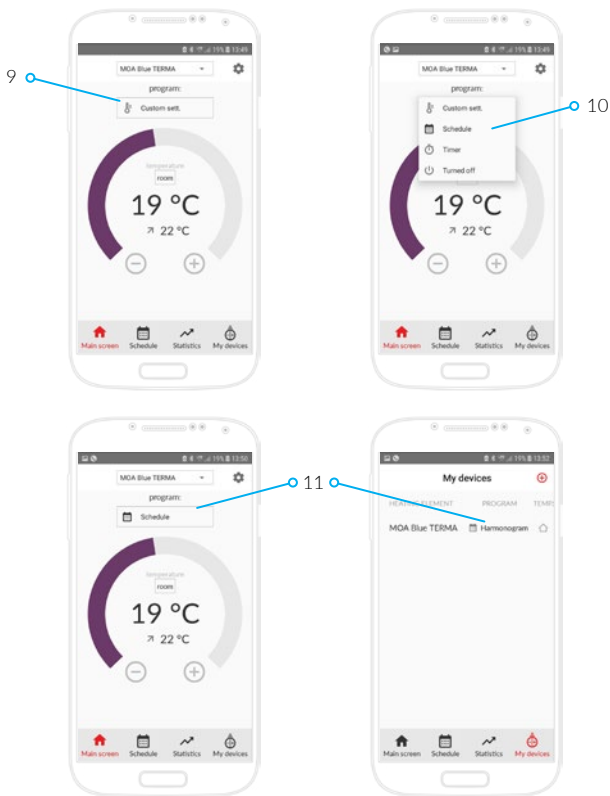


(1)



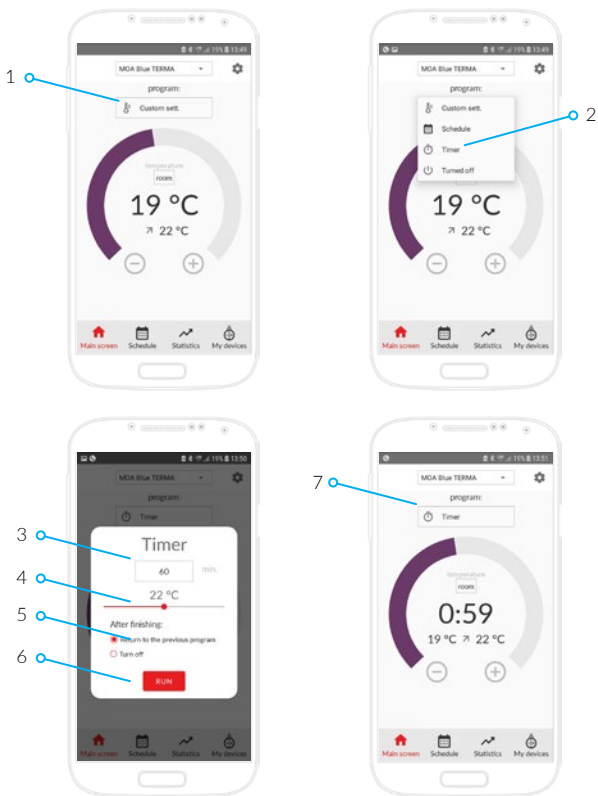
# Nastavení týdenního programu

(2)

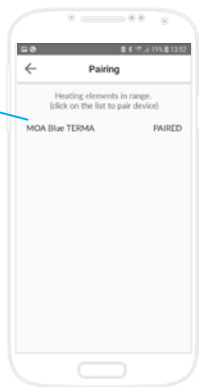




# Nastavení časovače pro sušení

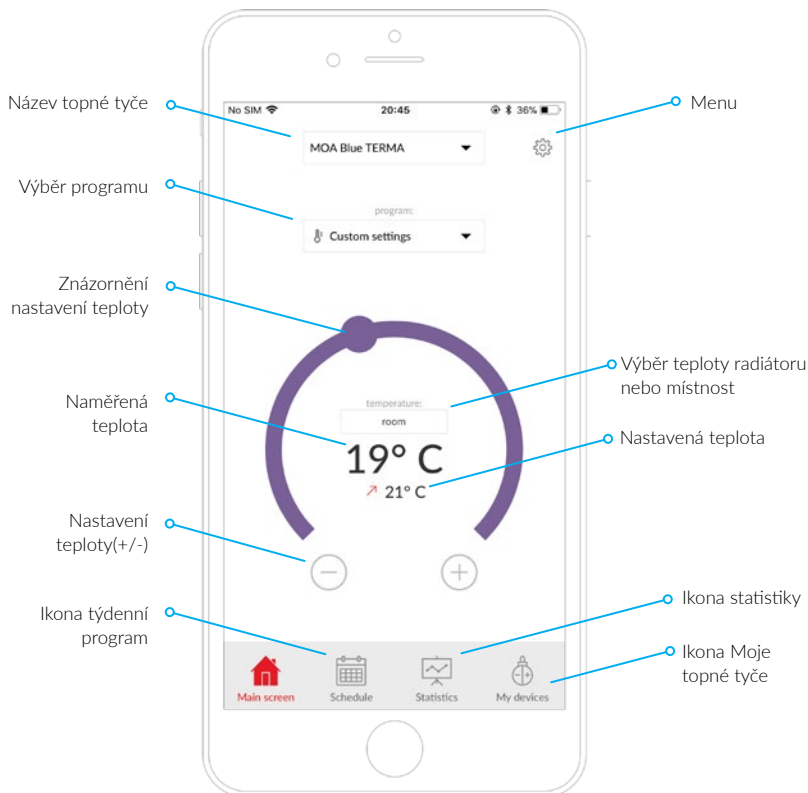


# Přidání další topné tyče



# Hlavní nabídka

(aktivní panel)



# Moje topné tyče

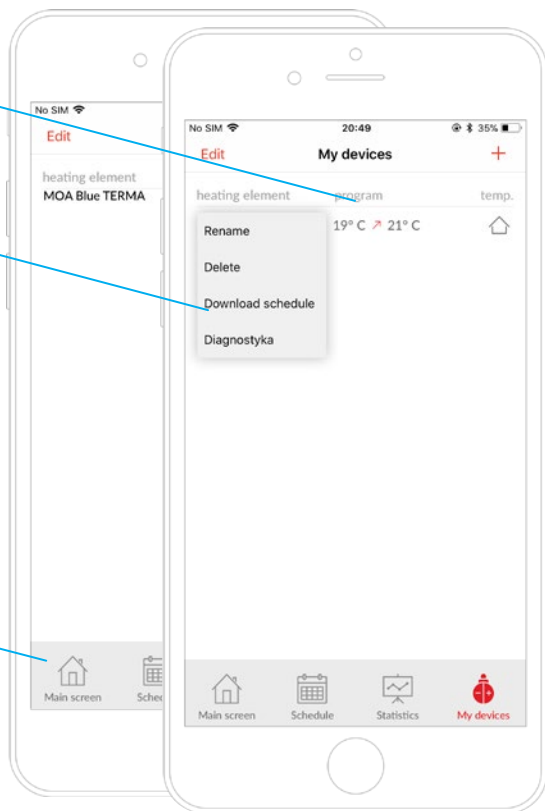
(přehled)



Informace o aktuálních  
nastaveních

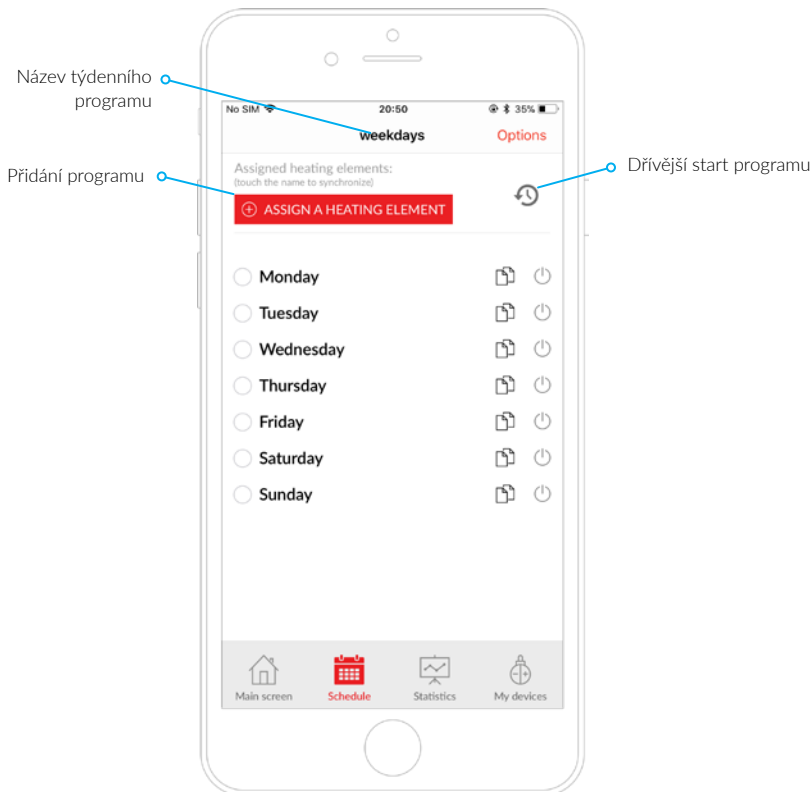
Možnosti

Návrat do Hlavní  
nabídky



# Týdenní program

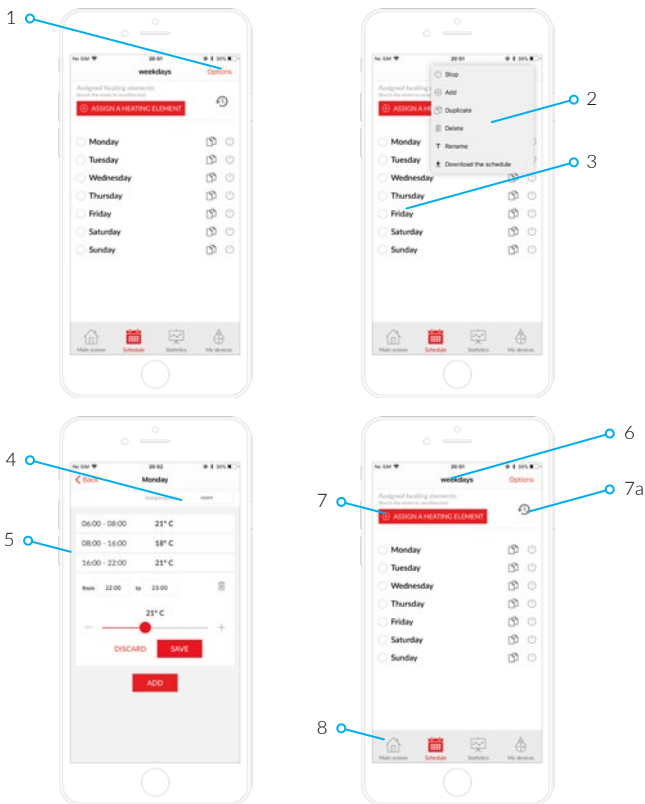
(aktivní panel)



# Nastavení týdenního programu

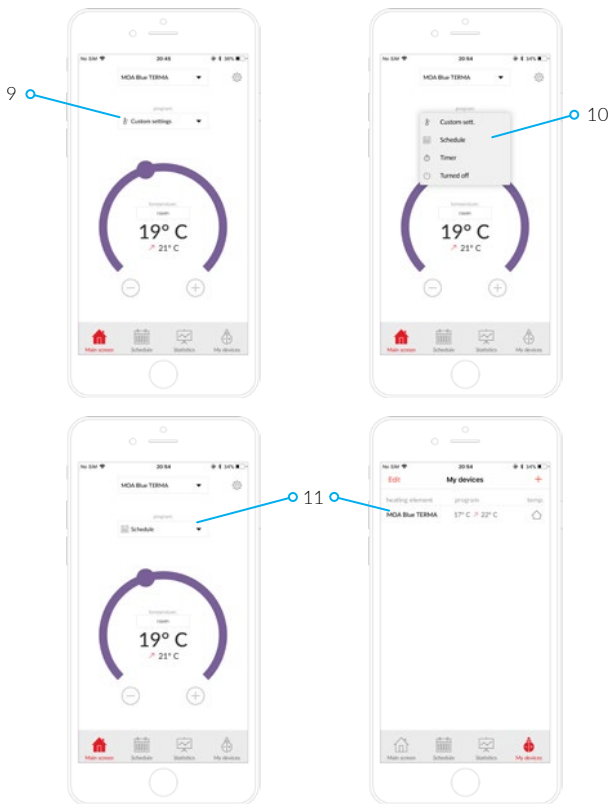


(1)

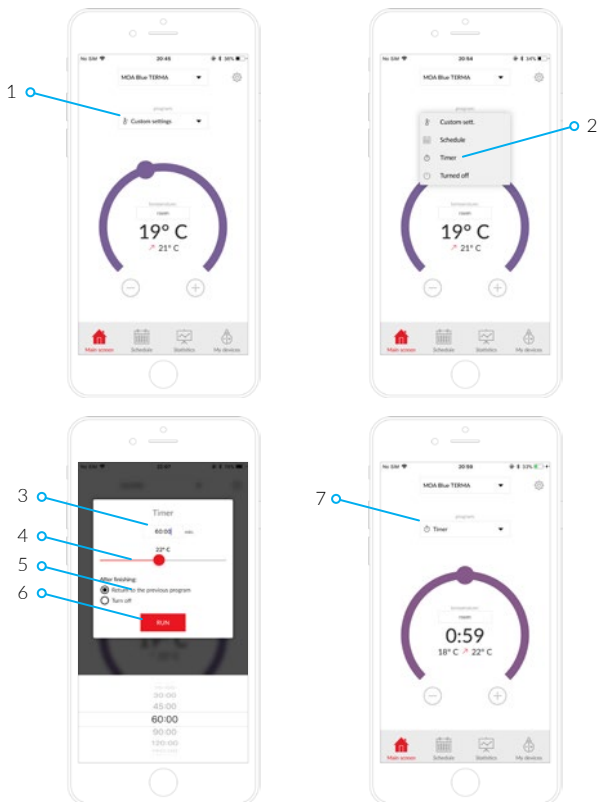


# Nastavení týdenního programu

(2)

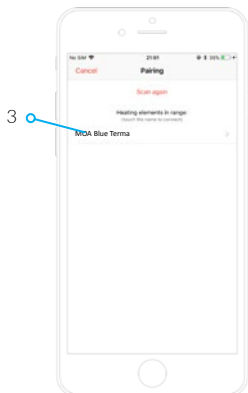
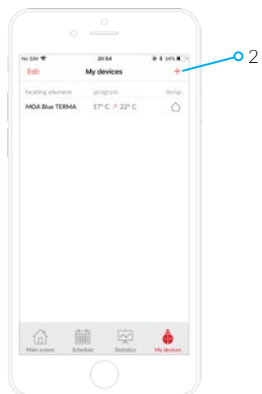


# Nastavení časovače pro sušení





# Přidání další topné tyče



TERMA Sp z o.o.

Czaple 100, 80-298 Gdańsk, Poland

[terma@termagroup.pl](mailto:terma@termagroup.pl)

[www.termagroup.pl](http://www.termagroup.pl)